

# Gulf Shores Wrap

## Sarasota

Designed by Laurie Beardsley

### Knitting Pattern DK423 - Intermediate

#### Size:

13" x 55" (33 cm x 140 cm)

#### Materials:

- Cascade Yarns® Sarasota: 60% Cotton, 40% Acrylic; 100 g (3.5 oz)/314 yds (287.5 m); 2 skeins of color #244 Peach
- US 7 (4.5 mm) knitting needles or size needed to obtain gauge.
- Yarn needle

#### Gauge:

21 sts x 23 rows = 4" (10 cm) in stitch pattern

#### Special Stitches:

1/1 LPC = left purl cross (sl next st to cn and place at front of work, p1, then k1 from cn)

1/1 RPC = right purl cross (sl next st to cn and place at back of work, k1, then p1 from cn)

[] = work instructions within brackets as many times as directed

#### Abbreviations:

BO = Bind off

CO = Cast on

K = Knit

ktbl = knit 1 st through

back loop

RS = right side

sl = slip

sl pw wyif = slip 1 st  
purlwise with yarn in  
front

St(s) = Stitch(es)

WS = wrong side



#### Begin Pattern:

CO 68 sts.

K two rows.

Work the body pattern as follows or per the chart.

Row 1 (RS): Sl pw wyif, k1, p1, k1, [p, k10, p] x5, k1, p1, k1, ktbl.

Row 2 (WS): Sl pw wyif, p1, k1, p1, [k, p10, k] x5, p1, k1, p1, ktbl.

Row 3: Sl pw wyif, k1, p1, k1, [p, 1/1 LPC, k6, 1/1 RPC, p] x5, k1, p1, k1, ktbl.

Row 4: Sl pw wyif, p1, k1, p1, [k2, p8, k2] x5, p1, k1, p1, ktbl.

Row 5: Sl pw wyif, k1, p1, k1, [p2, 1/1 LPC, k4, 1/1 RPC, p2] x5, k1, p1, k1, ktbl.

Row 6: Sl pw wyif, p1, k1, p1, [k3, p6, k3] x5, p1, k1, p1,



Thank you for downloading our free pattern. Find us online at <https://www.cascadeyarns.com> or on social:



ktbl.

Row 7: Sl pw wyif, k1, p1, k1, [p3, 1/1 LPC, k2, 1/1 RPC, p3] x5, k1, p1, k1, ktbl.

Row 8: Sl pw wyif, p1, k1, p1, [k4, p4, k4] x5, p1, k1, p1, ktbl.

Row 9: Sl pw wyif, k1, p1, k1, [p4, 1/1 LPC, 1/1 RPC, p4] x5, k1, p1, k1, ktbl.

Row 10: Sl pw wyif, p1, k1, p1, [k5, p2, k5] x5, p1, k1, p1, ktbl.

Row 11: Sl pw wyif, k1, p1, k1, [p5, k2, p5] x5, k1, p1, k1, ktbl.

Row 12: Sl pw wyif, p1, k1, p1, [k5, p2, k5] x5, p1, k1, p1, ktbl.

Row 13: Sl pw wyif, k1, p1, k1, [p5, k2, p5] x5, k1, p1, k1, ktbl.

Row 14: Sl pw wyif, p1, k1, p1, [k3, 1/1 RPC, p2, 1/1 LPC, k3] x5, p1, k1, p1, ktbl.

Row 15: Sl pw wyif, k1, p1, k1, [p4, k4, p4] x5, k1, p1, k1, ktbl.

Row 16: Sl pw wyif, p1, k1, p1, [k2, 1/1 RPC, p4, 1/1 LPC, k2] x5, p1, k1, p1, ktbl.

Row 17: Sl pw wyif, k1, p1, k1, [p3, k6, p3] x5, k1, p1, k1, ktbl.

Row 18: Sl pw wyif, p1, k1, p1, [k, 1/1 RPC, p6, 1/1 LPC, k] x5, p1, k1, p1, ktbl.

Row 19: Sl pw wyif, k1, p1, k1, [p2, k8, p2] x5, k1, p1, k1, ktbl.

Row 20: Sl pw wyif, p1, k1, p1, [1/1 RPC, p8, 1/1 LPC] x5, p1, k1, p1, ktbl.

Row 21: Sl pw wyif, k1, p1, k1, [p, k10, p] x5, k1, p1, k1, ktbl.

Row 22: Sl pw wyif, p1, k1, p1, [k, p10, k] x5, p1, k1, p1, ktbl.

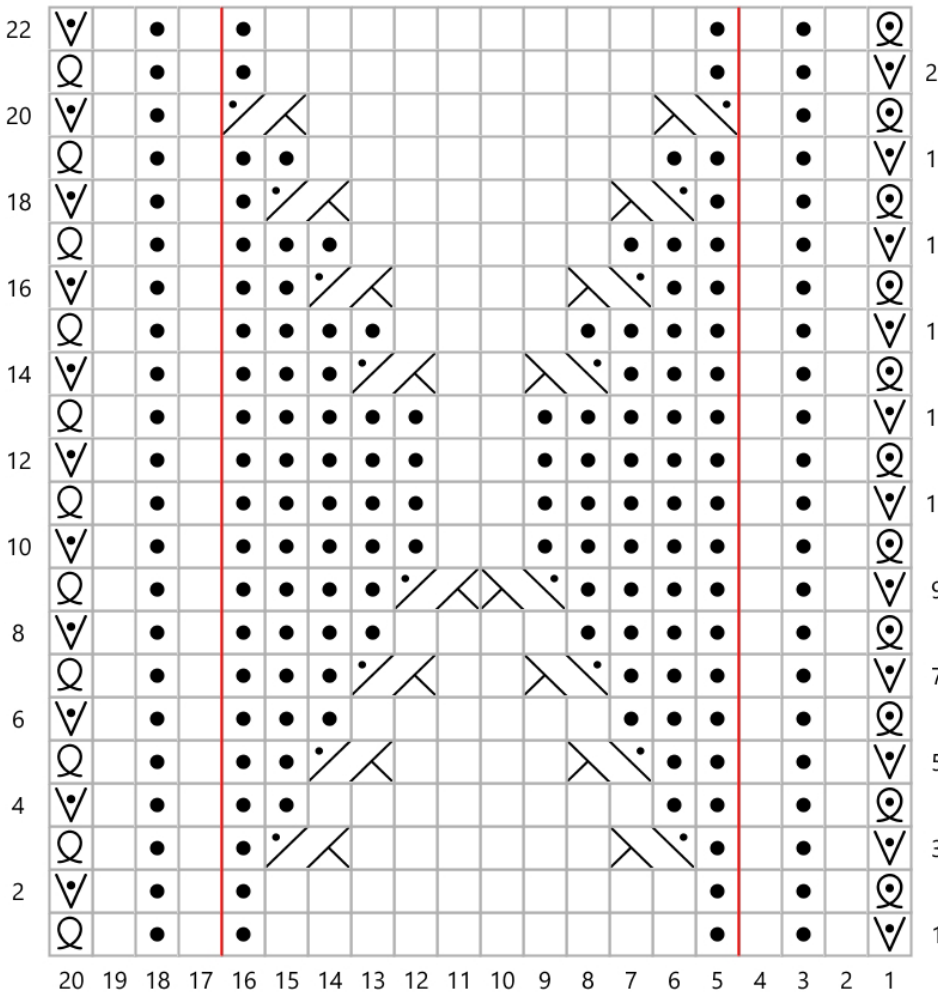
Work Rows 1-22 14 more times.

K two rows.

BO in k.

Perdido Key Chart

Key



- RS: knit
- WS: purl
- RS: purl
- WS: knit
- slip pw wyif
- RS: ktbl
- WS: ktbl
- 1/1 LPC
- 1/1 RPC
- work sts 5 times