



W416

## Luna Paints Lightning Lace Market Bag



Designed by Anastasia Blaes

# Luna Paints Lightning Lace Market Bag

## By Anastasia Blaes

### Finished Measurements

20" / 51 cm wide x 13½" / 34 cm long (unfilled; laid flat)

**\*\*Bag will stretch considerably when it is in use\*\***

### Materials

328 yds Cascade Luna Paints, (164 yds / 150 m per 3½ oz / 100 gram skein; 100% Peruvian Cotton) Shade # 9994: 2 skeins

Set of five Size 9 / 5.5 mm double-pointed knitting needles (dpns)

Tapestry needle

### Gauge

14 sts and 21 rows = 4" in Lightning lace patt st

**To save time, take time to check gauge and adjust needle size as needed**

### Abbreviations

**K2tog:** Knit two stitches together

**Ssk:** Slip two stitches as if to knit, then knit the two stitches together through the back loops.

### Designer Notes

- Feel free to use the two circ or magic loop methods rather than working with dpns; just make sure to have two dpns on hand for the drawstring.
- If your bag's top opening seems tight, try going up a needle size. It's important that the opening is loose enough for the items you want to put in it.
- Instead of using the i-cord technique to make the drawstring, here's an alternative: CO 48" worth of sts. Immediately BO all sts—then proceed as directed above. This drawstring will stretch out more than i-cord.

### Market Bag

#### Border:

CO 88 sts. Divide sts onto 4 dpns. Join work into a circle, being careful not to twist. Place st marker to indicate beg of rnd if desired.

**Rnds 1, 3, 5, and 7:** Knit around.

**Rnds 2, 4, and 6:** Purl around.

**Rnd 8 (eyelet rnd):** \*Yo, k2tog, rep from \* around.

**Rnds 9, 11, and 13:** Knit around.

**Rnds 10, 12, and 14:** Purl around.

#### Begin Lace:

Work rnds 1-16 four times as written below, (or refer to Lightning Lace Chart, see p. 2), then work rnds 1-8. (72 rows)

**Rnd 1 and all odd-numbered rnds:** Knit around.

**Rnds 2, 4, 6, and 8:** \*(Yo, K2tog) four times, k3, rep from \* around.

**Rnds 10, 12, 14, and 16:** \*(Ssk, yo) four times, k3, rep from \* around.

**Shape Base:**

**Rnd 1:** Knit around

**Rnds 2 and all even-numbered rnds:** Purl around.

**Rnd 3:** \*K9, k2tog, rep from \* around. (80 sts rem)

**Rnd 5:** \*K8, k2tog, rep from \* around. (72 sts rem)

**Rnd 7:** \*K7, k2tog, rep from \* around, (64 sts rem)

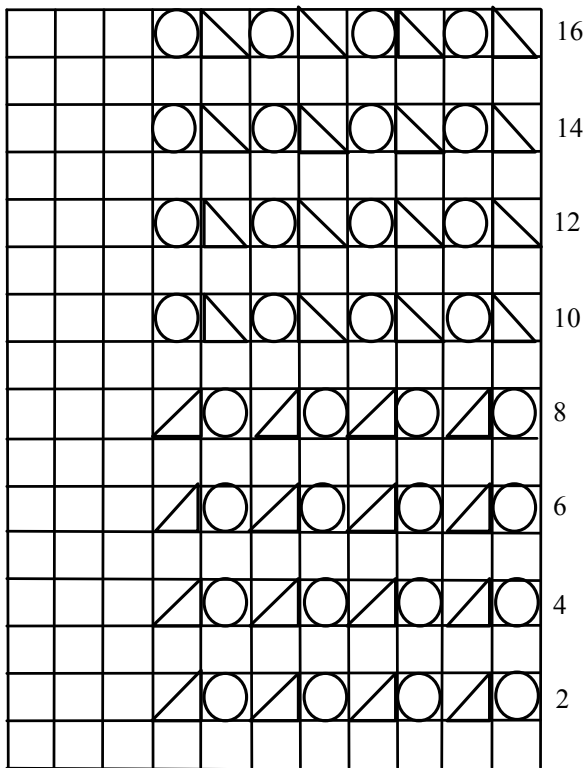
Continue as above, decreasing 8 sts every other rnd until 8 sts rem. Cut yarn, leaving a 6" tail. Thread tapestry needle with tail and insert through rem sts. Pull to tighten. Weave in ends.

**Drawstring:**

Leaving a 4" tail, CO 3 sts with two dpns. Make i-cord for 48". BO, leaving a 4" tail for sewing.

Thread drawstring through eyelets at top of bag. Weave 4 inch tail through opposite end of drawstring and secure so that drawstring is now one continuous loop. Weave in all ends.

**Lightning Lace Chart**



**Legend**

- Knit
- Yo
- ▧ K2tog
- ▨ Ssk