



W367

Pima Silk  
Springtime Texture



Designed By Melissa Leapman

# Pima Silk Springtime Texture

Designed by Melissa Leapman

## Sizes

Small (Medium, Large, 1X, 2X). Instructions are for smallest size, with changes for other sizes noted in parentheses as necessary.

## Finished Measurements

Bust: 35 (39, 43, 47, 51)"

Total length: 22 (23 ½, 24, 24 ½, 24 ½)"

## Materials

- Cascade Yarn's *Pima Silk*, 8 (9, 10, 11, 12) balls of #0317
- One pair size 7 knitting needles

## Gauge

In Crossed St Patt, 24 sts and 28 rows = 4".

In Basketweave Patt, 24 sts and 28 rows = 4". **To save time, take time to check gauge.**

## Crossed St Patt (*mult 6 + 2*) sts

See chart.

## Basketweave Patt (*mult 6 + 2*) sts

See chart.

## Back

CO 104 (116, 128, 140, 152) sts.

Beg Crossed St Patt, and work even until piece measures approx 6" from beg, ending after WS row.

Beg Basketweave Patt, and work even until piece measures approx 14 ½" from beg, ending after WS row.

## Shape Armholes

BO 5 (6, 7, 8, 9) sts at beg of next two rows, BO 2 (3, 4, 5, 6) sts at beg of next two rows, then decrease one st each side every row 2 (6, 10, 12, 16) times, then every other row 6 (5, 4, 4, 3) times—74 (76, 78, 82, 84) sts rem.

Cont even until piece measures approx 21 ½ (22, 22 ½, 23, 23)" from beg, ending after WS row.

## Shape Neck

**Next Row (RS):** Work across first 17 (18, 19, 21, 22) sts, join second ball of yarn and BO middle 40 sts, work to end row.

Work both sides at once with separate balls of yarn and dec 1 st each neck edge once—16 (17, 18, 20, 21) sts rem each side.

Cont even until piece measures approx 22 (22 ½, 23, 23 ½, 23 ½)" from beg, ending after WS row.

### **Shape Shoulders**

Work both sides at once with separate balls of yarn, and BO 4 (4, 5, 5, 5) sts at beg of next six rows, then BO 4 (5, 3, 5, 6) sts at beg of next two rows.

### **Front**

Same as back until piece measures approx 18 (18 ½, 19, 19 ½, 19 ½)" from beg, ending after WS row.

### **Shape Neck**

Work across first 28 (29, 30, 32, 33) sts, join second ball of yarn and BO middle 18 sts, work across to end row.

Work both sides at once with separate balls of yarn, and BO 4 sts each neck edge once, BO 3 sts each neck edge once, BO 2 sts each neck edge once, then dec 1 st each neck edge every row three times—16 (17, 18, 20, 21) sts rem each side.

Cont even, if necessary, until piece measures same as back to shoulders.

### **Shape Shoulders**

Same as back.

### **Sleeves**

CO 62 (62, 74, 74, 74) sts.

Beg Crossed St Patt, and inc 1 st each side every eighth row 0 (4, 0, 0, 2) times, every tenth row 3 (1, 0, 0, 3) times, every twelfth row 1 (0, 0, 0, 0) times, every fourteenth row 0 (0, 0, 1, 0) times, every sixteenth row 0 (0, 0, 2, 0) times, then every twentieth row 0 (0, 1, 0, 0) times, working new sts into the patt as they accumulate—70 (72, 76, 80, 84) sts.

Cont even until piece measures approx 7 (7, 7 ½, 7 ½, 7 ½)" from beg, ending after WS row.

### **Shape Cap**

BO 5 (6, 7, 8, 9) sts at beg of next two rows, then dec 1 st each side every fourth row 0 (0, 0, 1, 0) time, every other row 12 (16, 17, 17, 19) times, then every row 4 (0, 0, 0, 0) times—28 sts rem.

Work 0 (0, 1, 1, 1) row even.

BO 3 sts at beg of next four rows—16 sts rem.

BO.

### **Finishing**

Sew left shoulder seam.

## Neckband

With RS facing, pick up 130 sts evenly-spaced along neckline.

**Next Row (WS):** Knit across.

**Next Row:** Purl across.

Repeat last two rows once more.

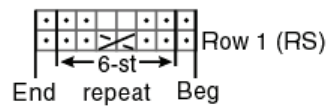
BO *loosely*.

Sew right shoulder seam, including neckband.

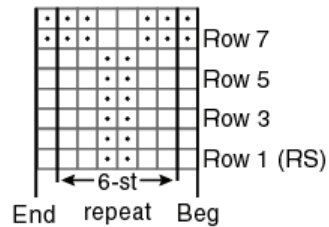
Set in sleeves.

Sew sleeve and side seams.

Crossed Stitch Pattern



Basketweave Pattern



Stitch Key □ = K on RS; P on WS

• = P on RS; K on WS

>< = Right Twist = Slip next st onto cn and hold in back; K1; K1 from cn **OR** K2tog, leaving them on LH needle; insert point of RH needle between these 2 sts and K the first one again

