

W266



Cascade 220 Wool
Cable & Knots Pillow



Designed by
Patty Nance

Cables and Knots Pillow

By Patty Nance for Cascade Yarns, Inc.

Level of Experience: Intermediate
Finished Measurements: 15 ½" x 16 ½"

Materials

Cascade 220 (100gm / 3.5 oz., 220 yards / 200 meters, 100% Peruvian Highland Wool):
2 skeins color # 8834 pink (MC), 2 skeins color # 8010 off-white (CC),
approximately 25 yards in another contrasting color (for waste yarn)

One pair size 8 (5mm) needles or size to obtain correct gauge

One 60" size 8 circular needle

Two size 8 double pointed needles

Cable needle

Crochet hook size F/5 (4mm)

Fiberfill stuffing

Tapestry needle

Safety pins

Stitch marker

Gauge: In honeycomb cable pattern, 24 sts and 26 rows = 4"

Construction Notes: The front and back of the pillow are worked in an all-over cable pattern. Lengths of 3-st I-cord are worked in the opposite color and knotted at 1-inch intervals. The knotted I-cord is then woven through the vertical cables so that each "hole" in the honeycomb is filled with a contrasting colored knot. The two sides of the pillow are attached to each other by picking up border stitches through both layers. The pillow is stuffed when the pickup is nearly complete. Once all the border stitches are picked up, work in the round and secure the last row of stitches by grafting to the back side of the pickup stitches.

Abbreviations:

4-st RC: Sl 2 sts to cn and hold to back, k2, k2 from cn

4-st LC: Sl 2 sts to cn and hold to front, k2, k2 from cn

Honeycomb cable pattern (multiple of 8 sts plus 6)

Row 1 (RS): P3, *4-st RC, 4-st LC; rep from * to last 3 sts, p3.

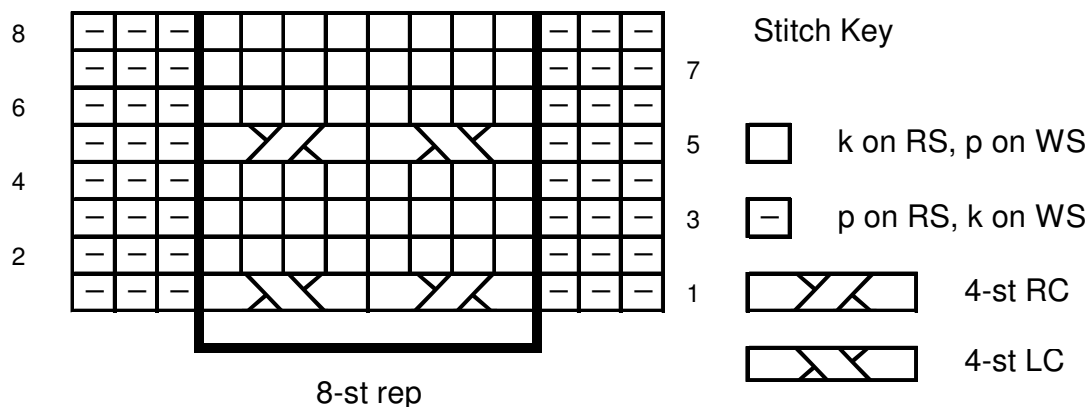
Row 2 and all WS rows: K3, p to last 3 sts, k3.

Rows 3 and 7: P3, k to last 3 sts, p3.

Row 5: P2, *4-st LC, 4-st RC; rep from * to last 3 sts, p3.

Row 8: Rep row 2

Rep rows 1 – 8 for pattern



3-Stitch I-cord: with 2 dpns, CO 3 sts. *Knit 3, do not turn your work. Slide stitches to opposite end of the needle. Repeat from * to desired length of cord. Cut yarn, thread the tail through all stitches and pull tight to secure.

Pillow front:

With waste yarn (wy), crochet cast on 86 sts.

Set up row: With straight needles and MC, k3, p to last 3 sts, k3.

Work Honeycomb cable pattern for a total of 11 repeats ending on row 2. Cut yarn.

With wy, work in st st for 3 rows. Bind off all sts. Block to 15" wide x 14" long.

I-cord A (make 10): With CC and dpns, work 24 inches of 3-stitch I-cord. Starting 1 inch from either end, loosely tie 11 knots at 1 inch intervals. Working vertically, weave knotted cord through the first column of cables, positioning a knot in each of the holes formed by the cables. Adjust the tightness of each knot so that the fabric lays flat. Weave the remaining knotted cords through the cables that have 11 vertical holes (every other column). Using the yarn tails, whip stitch the ends of the I-cord to the wrong side of the fabric.

I-cord B (make 9) With CC and dpns, work 22 inches 3-st I-cord and fasten off. Starting 1 inch from either end, loosely tie 10 knots at 1 inch intervals. Working vertically, weave knotted cord through the second column of cables, positioning a knot in each of the holes formed by the cables. Adjust the tightness of each knot so that the fabric lays flat. Weave the remaining knotted cords through the cables that have 10 vertical holes. Using the yarn tails, whip stitch the ends of the I-cord to the wrong side of the fabric.

Pillow back:

Work as for pillow front using CC for the honeycomb cable fabric and MC for the I-cords.

Border:

With wrong sides together, match the cast on / bind off / side edges of the front to those of the back. Pin the pillow front to the pillow back carefully at each corner and at the midpoint of all four edges. Hold the pinned pieces with the pillow front facing you. The cast on edge should be at the bottom; the bind off edge at the top. Using the circular needle and MC, start from the upper right corner and pick up and knit through both layers. Pick up 86 stitches along the top edge, 4 stitches to every 5 rows along the left side, 86 stitches along the bottom edge and 4 stitches to every 5 rows along the right side, stopping 4 inches before the end. Remove the safety pins and stuff the pillow to desired firmness. Count your stitches. Resume the pickup, adjusting so that the total stitch count is divisible by 4 and working until you reach the starting point of the pickup. Place marker to indicate beginning of round.

Round 1: purl all stitches to form a garter ridge.

Rounds 2 – 10: *K3, p1. Repeat from * to end of round.

Remove the marker. Turn your work so the pillow back is facing you. Leaving an 18" tail, cut yarn and thread the end through the tapestry needle. Fold the border toward you so the stitches on the needle are alongside the loops created between the picked up stitches. Using a modified Kitchener Stitch, sew the border closed as follows:

Step 1: Pass the yarn through the first pickup loop from top to bottom. Pass the yarn through the first stitch on the knitting needle as if to purl.

Step 2: Pass the yarn through the previously worked pickup loop from bottom to top, then through the next loop from top to bottom.

Step 3: Pass the yarn through the first stitch on the knitting needle as if to knit, dropping it from the needle. Pass the yarn through the next stitch on the knitting needle as if to purl, leaving it on the needle.

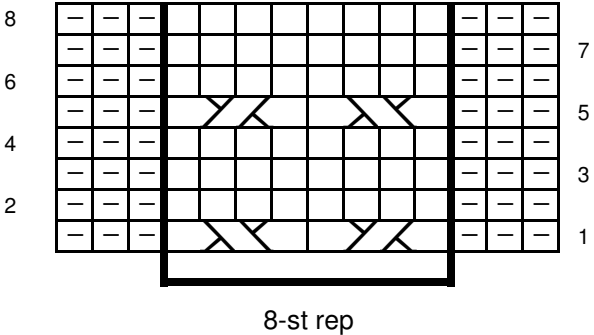
Repeat steps 2 and 3 around the entire border, joining a new 18" length of yarn as needed. End by passing the yarn through the last stitch on the knitting needle as if to knit and through the last pickup loop from bottom to top.

Finishing: Weave in yarn tails, if any. Adjust the I-cord knots if necessary.





Cables and Knots Pillow

by Patty Nance for Cascade Yarns

Chart for Honeycomb Cable pattern



Stitch Key

-  k on RS, p on WS
-  p on RS, k on WS
-  4-st RC
-  4-st LC