

Colorblock Fair Isle Pullover

Designed by Melissa Leapman for Cascade Yarns

Sizes

Small (Medium, Large, 1X). Instructions are for smallest size, with changes for other sizes noted in parentheses as necessary.

Finished Measurements

Bust: 34 (41, 47 ½, 54)"

Length: 22 (22 ¼, 22 ½, 23)"

Materials

- ◆ Cascade Yarn's 220, 2 (2, 2, 3) hanks of #9448 (A), 1 (1, 2, 2) hanks *each* of #7826 (B), #9446 (C), #2435 (D), #2437 (E) and #2446 (F), and 2 (2, 3, 3, 4) hanks of #9460 (G)
- ◆ One pair each of sizes 6 and 8 knitting needles or size needed to obtain gauge

Gauge

In Stockinette St Patt with larger needles, 19 sts and 22 rows = 4". **To save time, take time to check gauge.**

K1 P1 Rib Patt *(over mult. 2 + 1 sts)*

Row 1 (RS): *K1, P1. Repeat from * across, ending row with K1.

Row 2: *P1, K1. Repeat from * across, ending row with P1.

Repeat Rows 1 and 2 for patt.

Stockinette St Patt *(over any number of sts)*

Row 1 (RS): Knit across.

Row 2: Purl across.

Repeat Rows 1 and 2 for patt.

Fair Isle Patt

See chart.

Notes

- ◆ For fully-fashioned decreases, on RS rows: K1, SSK, work across in patt as established until 3 sts rem in row, ending row with K2tog, K1; on WS rows: P1, P2tog, work across in patt as established until 3 sts rem in row, ending row with SSP, P1.

- ◆ Row gauge is crucial to this design. Carefully measure your row gauge to ensure that the fair isle pattern is positioned correctly.

Back

With smaller needles and A, CO 81 (97, 113, 129) sts.

Beg K1 P1 Rib Patt, and work even until piece measures approx 3" from beg, ending after WS row.

Change to larger needles, beg Stockinette St, and work even with A until piece measures approx 9 ³/₄" from beg, ending after WS row.

Beg Fair-Isle Patt, and work even until piece measures approx 13 ¹/₂" from beg, ending after WS row. *Make a note of which row of patt you are on.*

Shape Armholes

Cont Fair Isle Patt as established, BO 2 (4, 6, 9) sts at beg of next two rows, BO 2 (3, 5, 5) sts at beg of next two rows, then work fully-fashioned decreases (see Notes) each side every row 5 (11, 13, 16) times, then every other row 2 (0, 0, 0) times—59 (61, 65, 69) sts rem.

When Row 43 of Fair-Isle Chart is completed, cont even with G until piece measures approx 21 (21 ¹/₄, 21 ¹/₂, 22)" from beg, ending after WS row.

Shape Shoulders

BO 4 (5, 5, 6) sts at beg of next four rows, then BO 5 (4, 6, 6) sts at beg of next two rows—33 sts rem.

BO.

Front

Same as back until piece measures approx 19 (19 ¹/₄, 19 ¹/₂, 20)" from beg, ending after WS row.

Shape Neck

Next Row (RS): Work across first 23 (24, 26, 28) sts; join second ball of yarn and BO middle 13 sts, cont patt as established to end row.

Work both sides at once with separate balls of yarn, and BO 5 sts each neck edge once, BO 2 sts each neck edge twice, then dec 1 st each neck edge every row once—13 (14, 16, 18) sts rem each side.

Cont even until piece measures same as back to shoulders, ending after WS row.

Shape Shoulders

Same as back.

Sleeves

With smaller needles and A, CO 43 sts. Beg K1 P1 Rib Patt, and work even until piece measures approx 2" from beg, ending after WS row.

Change to larger needles, beg Fair-Isle Patt, and inc 1 st each side every fourth row 0 (0, 0, 2) times, every sixth row 1 (5, 9, 13) times, then every eighth row 10 (7, 4, 0) times, working in G after Row 43 of Fair-Isle Chart is completed—65 (67, 69, 73) sts.

Cont even until piece measures approx 18 ½" from beg, ending after WS row, ending after same row of pattern as front and back to armholes.

Shape Cap

BO 2 (4, 6, 9) sts at beg of next two rows, then work fully-fashioned decreases (see Notes) each side every other row 1 (4, 8, 12) times, then every row 19 (15, 10, 5) times—21 sts rem.

BO 2 sts at beg of next four rows—13 sts rem.

BO.

Finishing

Sew left shoulder seam.

Neckband

With RS facing, smaller needles, and G, pick up and knit 92 sts around neckline.

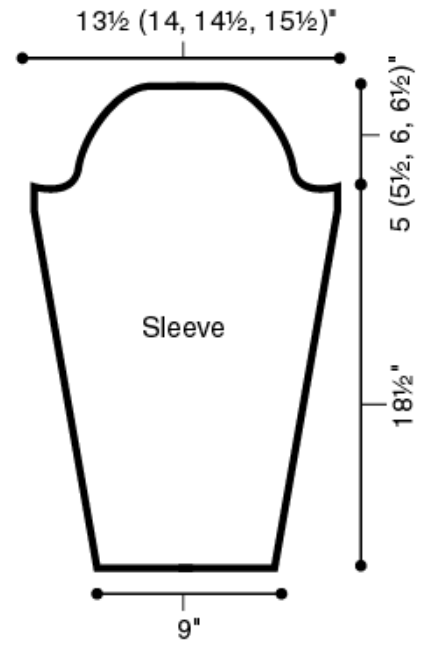
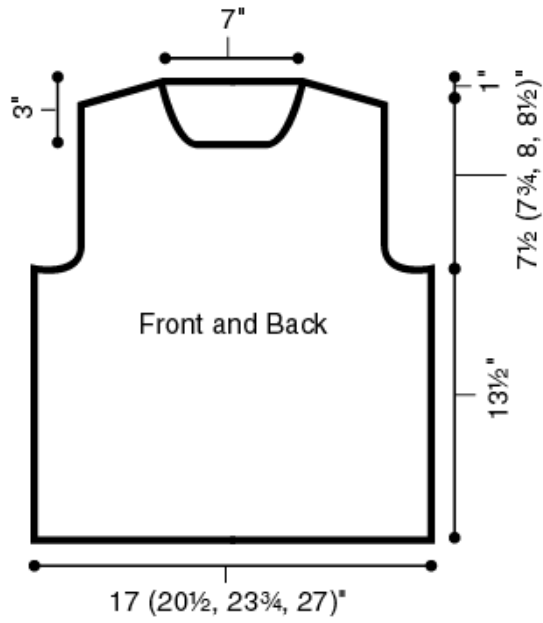
Next Row (WS): *K1, P1. Repeat from * across.

Repeat last row until band measures approx 4" from beg.

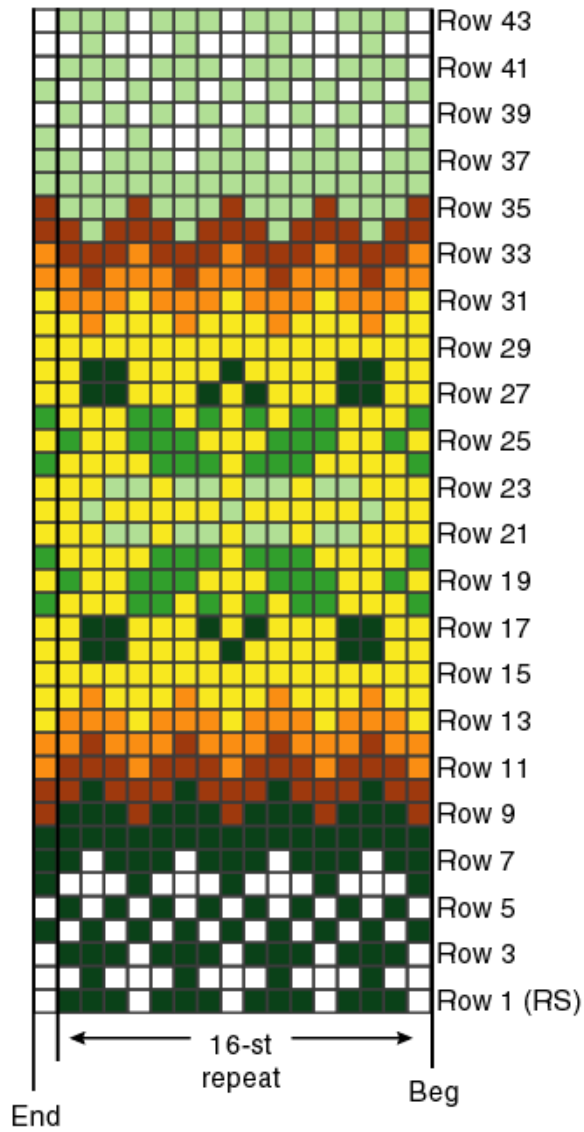
BO *loosely* in rib.

Sew right shoulder seam, including side of neckband.

Set in sleeves. Sew sleeve and side seams.



Fair Isle Pattern



Color Key ■ = A

□ = B

■ = C

■ = D

■ = E

■ = F

■ = G

Stitch Key □ = K on RS; P on WS