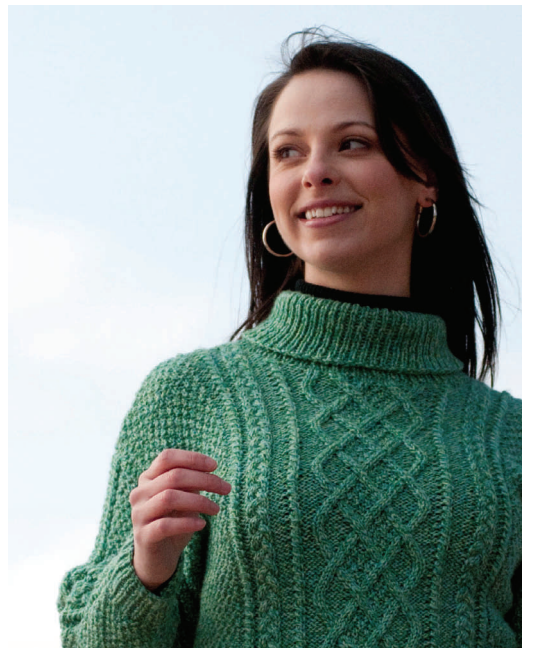




W210

Cascade 220 Superwash  
Lattice Knit Sweater and Hat



Designed By Susie Bonell

# 220 Superwash Lattice Knit Sweater & Hat

By Susie Bonell

Materials: Cascade Yarns 220 Superwash sweater: 7, 8, 9, 10 skeins of #1928; Hat 1 skein of #1928  
Size 6 and 7 needles; also for hat and collar 16" circular and/or double pointed needles in both sizes.  
Cable needle, yarn needle

Gauge: 5 st = 1", 6 rows = 1" in double seed stitch

Finished Measurements: 37", 40", 44", 49"

C2L: Slip next st onto cable needle and hold in front of work, K1, K st from cable needle.

C3F: Slip next 2 sts onto cable needle and hold in front, K next st, K 2 sts from cable needle.

T3F = Slip next 2 sts onto cable needle and hold at front of work, purl next st from left-handed needle, then knit sts from cable needle.

T3B = Slip next st onto cable needle and hold at back of work, knit next 2 sts from left-handed needle, then purl st from cable needle.

T2: Skip 1 st, Knit into the back of the 2<sup>nd</sup> st and leave on the needle, knit in the front of the 1<sup>st</sup> st and take both sts off needle.

C4F: Slip 2 sts onto a cable needle and hold in front, knit next two sts, knit 2 from cable needle.

C2B: Slip 2 sts onto a cable needle and hold in back, knit next two sts, knit 2 from cable needle.

## Double Seed Stitch:

Row 1: \* K1, P1\* rep between \*'s across.

Row 2: K on the K sts, P on the P sts across as they appear.

Row 3: \*P1, K1\* rep between \*s across.

Row 4: Same as row 2.

Repeat 4 rows for pattern.

## 6 Stitch Plait

Row 1: (R side) C4F, K2.

Row 2: Purl

Row 3: K2, C4B.

Row 4: Purl.

Repeat 4 rows for pattern.

## Panel Pattern (Over 37 sts)

Row 1: (R side) P2, C2L, P4, T3B, T3F, (K1, P1) twice, T3B, C3F, P4, T3B, P2, C2L, P2.

Row 2 and all even rows: K on the K sts and P on P sts as they appear.

Row 3: P2, C2L, P3, T3B, P2, T3F, K1, P1, T3B, K1, P1, C3F, P2, T3B, P3, C2L, P2.

Row 5: P2, C2L, P2, T3B, P4, T3F, T3B, (K1, P1) twice, C3F, T3B, P4, C2L, P2.

Row 7: P2, C2L, P2, K2, P6, C4B, (K1, P1) 3 times, C4B, P5, C2L, P2.

Row 9: P2, C2L, P2, T3F, P4, T3B, C3F, (K1, P1) twice, T3B, T3F, P4, C2L, P2.

Row 11: P2, C2L, P3, T3F, P2, T3B, K1, P1, C3F, K1, P1, T3B, P2, T3F, P3, C2L, P2.

Row 13: P2, C2L, P4, T3F, T3B, (K1, P1) twice, C3F, T3B, P4, T3F, P2, C2L, P2.

Row 15: P2, C2L, P5, C4F, (K1, P1) 3 times, C4F, P6, K2, P2, C2L, P2.

Row 16: As row 2.

Repeat 16 rows for pattern.

## SWEATER BACK

With size 6 needles, cast on 91, 103, 111, 121 sts. Work in K1, p1 ribbing for 2 1/2" increasing to 102, 115, 125, 135 sts on last wrong side row. Change to size 7 needles and begin patterns as follows:

Work double seed st for 19, 25, 30, 35 sts, place marker, P2, T2, P2, work Row 1 of 6 Stitch Plait, P2, place marker, work Row 1 of Cable Panel, place marker, P2, work Row 1 of 6 Stitch Plait, P2, T2, P2, place marker, work double seed st for 19, 25, 30, 35 sts. Continue as established, working stitches on all wrong side rows as they appear, until back measures 15 1/2", 15 1/2", 16", 16" or desired length to armhole. Place marker at sides to indicate armhole placement and continue until armhole measures 10", 10 1/2", 11", 11 1/2". Bind off all sts in pattern.

## SWEATER FRONT

Work as for back until 5 1/2", 6", 6", 6" above armhole marker.

Shape Neck:

Work to center 19, 19, 21, 21 sts. Add another ball and bind off these center sts. Work to end of row. Working both sides at once, bind off 2 sts at each neck edge 3,3,3,3 times, then 1 st at each neck edge every other row 6, 6, 8, 9 times. Work until front measures same as back to top and bind off in pattern.

## SLEEVES

With size 6 needles, cast on 43, 43, 45, 56 sts and work in K1, P1 ribbing for 2 1/2" increasing to 54, 54, 58, 62 sts on the last wrong side row.

Work sleeves in double seed stitch for 18, 18, 20, 22 sts, place marker, P2, T2, P2, work row 1 of 6 Stitch Plait, P2, T2, P2, place marker, work double seed stitch to end.

Work in patterns as established while increasing as follows:

Inc 1 st each side every 2<sup>nd</sup>, 2<sup>nd</sup>, 2<sup>nd</sup>, 3<sup>rd</sup> row 10, 14, 16, 30 times.

Inc 1 st each side every 4<sup>th</sup>, 4<sup>th</sup>, 4<sup>th</sup>, 0 row 16, 15, 14, 0 times.

Continue in pattern until sleeve measures 17 1/2", 18", 18", 18 1/2".

Bind off in pattern.

Sew front to back at shoulders.

## COLLAR

With size 6 circular or double pointed needles, and right side facing at center back, pick up and knit 110, 116, 130, 136 sts evenly around neck edge. Join and work in K1P1 ribbing in the round for 2", change to size 7 needles and work until collar measures 6" or desired length. Bind off loosely in ribbing.

Weave in all ends. Sew sleeves to body and side seams. Steam slightly if needed.

## HAT

With size 6 circular or double pointed needles cast on 96 sts. Work in the round in K1P1 ribbing for 1 ¼" increasing to 120 sts on last row. (inc in every 4<sup>th</sup> st around) Change to size 7 needles and begin pattern as follows:

Row 1: \*P2, T2, P2, work Row 1 of 6 Stitch Plait\* repeat between \*'s around.

Row 2: K on the K sts and P on the P sts as they appear.

Continue in patterns as established working all even rows as they appear. Work until hat measures 8" from the beginning ending on an odd number row.

Begin decreasing as follows: (next even row of pattern) changing to double pointed as necessary.

Row 1: \*P2tog, K2, P2tog, K6\* rep between \*'s around.

Row 2: \*P1, T2, P1, work next 6 stitch plait row\* rep between \*'s around.

Row 3: \*P1, K2 tog, P1, (K2tog) 3 times\* rep between \*'s around.

Row 4: Work sts as they appear.

Row 5: K2 tog around.

Row 6: Knit around.

Row 7: K 2 tog around.

Cut yarn leaving plenty to run yarn needle with yarn through remaining stitches and draw up and secure. Weave in all ends.