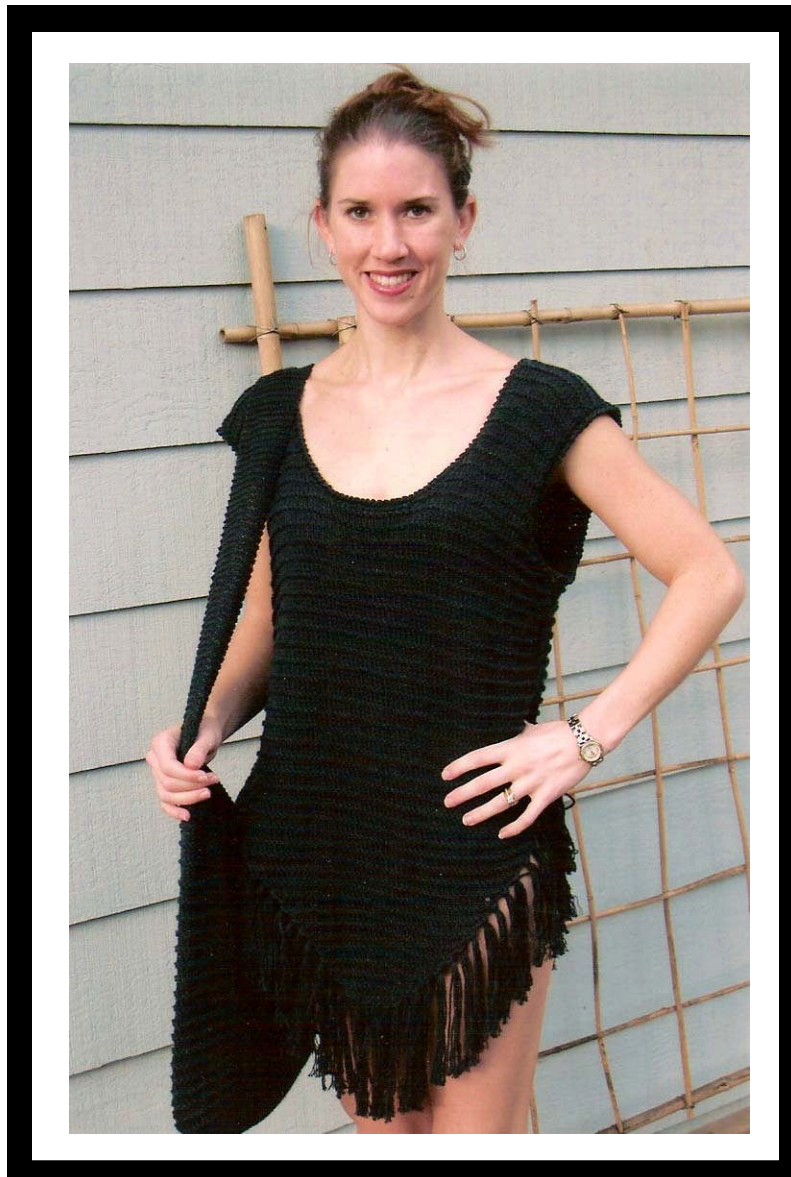




**Sierra Beach Duo (W157)
Using Cascade Sierra Pattern**



SIERRA BEACH DUO (W157)

MATERIALS:

SIERRA - 4/ 4/ 5/ 5 SKS.-cover up
SIERRA –4 SKS – beach bag

SIZES:

S(30-34), M(36-40.), L(42-46), XL(48-52)

NEEDLES: #7 for bag & #9 for cover up

CROCHET HOOK G

TENSION: 4 STS=1"

NOTE: THIS IS KNITTED LOOSELY SO WHEN MEASURING TENSION, PULL DOWN SLIGHTLY AS THE COVER UP WILL PULL DOWN WHEN WORN.

PATTERN:

1. KNIT
2. KNIT
3. PURL
4. KNIT

COVER UP: Back and front both, make 2 like pieces.

Using #9 needle, cast on 11 sts. Begin pattern repeat and at the same time, increase 1 st at the beginning of each row to 72, 84, 96, 108 sts. Continue in pattern for 21".

Shape armholes as follows: Bind off 3, 4, 5, 6 sts at the beginning of the next 2 rows, then decrease 1 st at each armhole edge 2 times. Bind off center 10, 11, 12, 13 sts and work on each shoulder separately. Continue to decrease at the arm edge 4, 5, 6, 7 times more and at the neck edge, bind off 2 sts 1 time and then decrease at the neck edge 1 st 5 times. When armhole measures 8 ½ ", place shoulder sts on hold to be knitted together later.

When both pieces are finished, place the right sides together and using 3 needles, knit the shoulders together.

Using crochet hook, work 1 row of single crochet around neck edge and then 1 row of reverse single crochet. Repeat the crochet edge for both armholes.

Fringe: cut 11" strands and attach them to every other st. around the bottom edge.

BAG:

Using #7 needle, cast on 15 sts and knit all rows until piece measures 18". Place marker (pm) Pick up 80 sts along the long edge, pm, 15 sts along the short edge, pm and 80 sts along the 2nd long edge, pm. Knit 2 rounds, purl 1 round. Continue in pattern for 16". (K2, yo, k2tog) repeat around bag. Work another 2" of pattern st and bind off 80 sts from long side, k15 and place on hold for later, bind off 80 sts from 2nd long side, k 15. Continue to knit 15 sts until strap measures 20" long, or desired length and knit together with the 15 sts you left on hold. Draw string, with crochet hook, and double stranding the Sierra, chain 200. Weave draw string thru yo holes in bag starting in the center of one of the 80 st sides. Knot the ends of the draw string, and go enjoy the beach.