



**Raglan Cable Saddle Shoulder Sweater (W153)
Using Cascade Eco Pattern**



Raglan Cable Saddle Shoulder Sweater (W153)

Materials:

Cascade Eco wool, (100% wool, 428 yds/ 250 gram ball) color 8085; 3, 3, 3, 4, 4 balls
Size US 10.5 needles
Tapestry needle

Gauge:

Central Cable with 2 purl stitches on either side of cable: 3.75"
Moss stitch: 4 sts/inch

Sizes: (Finished Measurements)

XS	S	M	L	XL
36	40	44	48	52

Pattern Stitches:

Moss Stitch

- 1) *K1, P1, repeat from *
- 2) *P1, K1, repeat from *
- 3) *P1, K1, repeat from *
- 4) *K1, P1, repeat from *

Staghorn Cable:

Follow charts given

Notes:

Two edge stitches on all pieces are selvedge stitches and are worked in stockinette. They are included in cast on number, but not in other stitch counts. When working Moss stitch after the Staghorn Chart, make sure to balance the first Moss stitch panel.

BACK :

Cast on 74, (82, 90, 98, 106). Work Moss stitch over first 27, (30, 34, 38, 42) stitches (remembering to keep first and last stitch of every row in stst for selvedge), work 20 stitches of row 1 of Staghorn Chart, then work Moss stitch to end. Continue pattern as established until back is 14" from cast on.

Begin decreasing for armholes. Decrease one stitch each side every RS row until total length is 23, (24, 25, 25, 26)" long. Bind off all stitches.

FRONT:

Work as for Back until work is 21, (22, 23, 23, 24)" long. On next RS row, work to central cable. Bind off center 20 sts. Join a second ball of yarn and work to end of row. Working right and left sides of neck with separate balls of yarn, work neck by decreasing 1 stitch at neck edge every other row AND AT THE SAME TIME continue armhole decreases. When neck is 2" deep bind off remaining stitches.

SLEEVES: Make 2

Cast on 38. Work 10 stitches in Moss stitch pattern (remembering to keep first and last stitch of every row in stst for selvedge.), work 20 stitches of row 1 of Staghorn Chart, then work Moss stitch to end. On next and every 4th RS row, increase one stitch each side. Continue increasing as established until 72, (80, 88, 88, 88) sts on needle and sleeve is 14" long. Begin armhole shaping. Decrease one stitch each side every RS row until total sleeve length is 21, (22, 23, 23, 24)" long. For Right Sleeve, bind off all remaining stitches. For Left Sleeve, on next WS row, bind off first 15, (16, 17, 17, 18) sts. Continue on remaining stitches following Chart 2 until sleeve extension is 5, (5.5, 6, 8, 8.5)" long. Sleeve extension will be sewn to upper back of the sweater and to the top of the right sleeve.

NECK:

Cast on 11 sts. Work Chart 3 for 20.5", or length to go around the neck edge without stretching. Bind off all stitches.

POCKETS: Make 2

Cast on 30 sts. Work 5 sts Moss Pattern, Cable chart, 5 sts Moss Pattern. Continue on these 30 sts maintaining given pattern, until pocket is 6" long. Bind off all sts in pattern.

FINISHING:

Sew Right Sleeve to Front and Back. Sew Left Sleeve to Front and Back along raglan line. Sew sleeve extension across neck edge of back and to top of Right Sleeve. Sew side and sleeve seams. Sew neckband into tube and sew into neck opening, easing band to fit. Secure all ends.

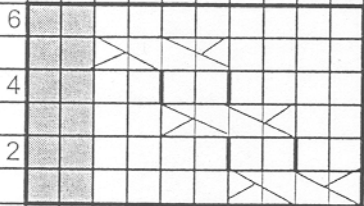
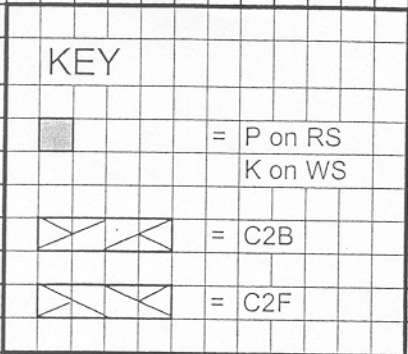


CHART 3

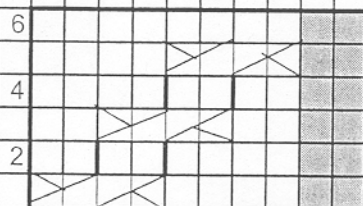


CHART 2

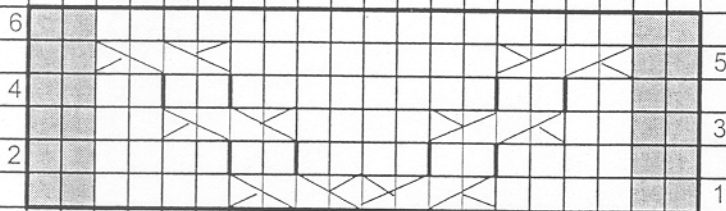


CHART 1 STAGHORN CABLE