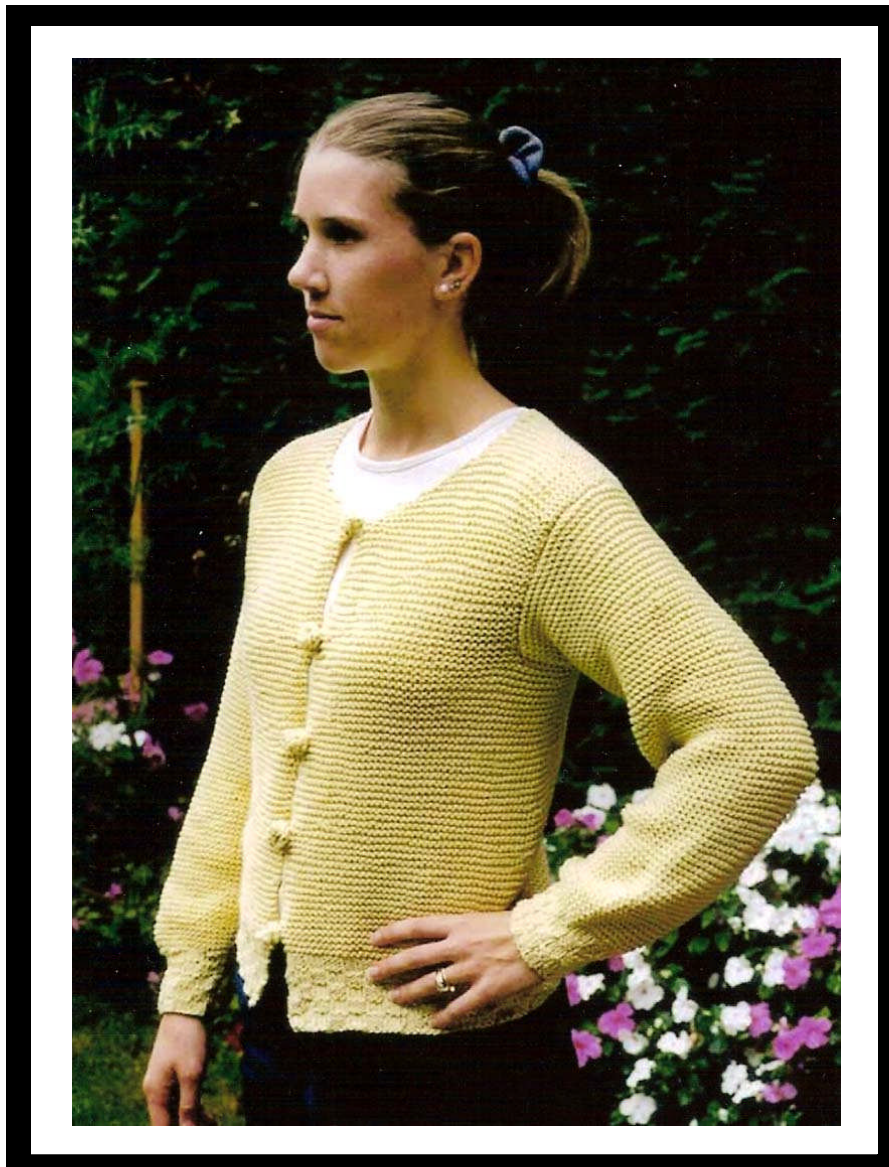




**Sierra Basket & Garter Cardigan (W147)  
Using Cascade Sierra Pattern**



## SIERRA BASKET & GARTER CARDIGAN (W147)

**FINISHED BUST SIZES:** 31"/ 33 ½ "/ 36 ½ "/ 39"

**FINISHED LENGTH:**  
22" FOR ALL SIZES

**MATERIALS:**

SIERRA BY CASCADE YARNS= 5/ 6/ 6/ 7 SKS.

**NEEDLES:** #7 & #8 CIRCULAR

**TENSION:** 4 ½ STS = 1"

**STITCHES USED:**

GARTER STITCH=GTR.  
ST.=KNIT ALL STS AND ROWS

- RIB PATTERN=**
1. (K3, P3) END ROW WITH K3
  2. (P3, K3) END ROW WITH P3
  3. AS ROW 1
  4. AS ROW 2
  5. AS ROW 2
  6. AS ROW 1
  7. AS ROW 2
  8. AS ROW 1

**NOTE: THE BODY IS WORKED IN 1 PIECE TO THE ARMHOLES.**

**BODY:**

CAST ON 141/ 153/ 165/ 177 STS. WITH #7 NEEDLES AND WORK 20 ROWS OF RIB PATTERN. CHANGE TO #8 NEEDLES AND WORK THE REST OF THE BODY IN GTR. ST. WHEN PIECE MEASURES 13" BIND OFF FOR ARM HOLES AS FOLLOWS:

KNIT 29/ 32/ 35/ 38 STS. FOR RIGHT FRONT, BIND OFF 16 STS, KNIT 51/ 58/ 64/ 70 STS FOR BACK, BIND OFF 16 STS. KNIT REMAINING 28/ 32/ 35/ 38 STS. FOR LEFT FRONT CONTINUE IN GTR. ST. FOR RIGHT FRONT ONLY FOR 5 ½".

SHAPE NECK: BIND OFF 4 STS 1 TIME, 3 STS 1 TIME, 2 STS 1 TIME AND 1 ST 4 TIMES (13 STS. TOTAL IN DECREASES) WHEN ARMHOLE MEASURES 8" BIND OFF. REJOIN YARN TO BACK AND CONTINUE IN GTR. ST. FOR 7". BIND OFF CENTER 24 STS. AND KNIT EACH SHOULDER SEPERATELY FOR 1" MORE AND BIND OFF THE REMAINING SHOULDER STS. REJOIN YARN TO LEFT FRONT AND KNIT AS FOR RIGHT FRONT.

**SLEEVES:**

CAST ON 39 STS. WITH #7 NEEDLE AND WORK IN RIB PATTERN AS FOR BOTTOM. CHANGE TO #8 NEEDLE AND INCREASE 10 STS. ON 1<sup>ST</sup> ROW, THEN INCREASE 1 ST. AT EACH EDGE ON THE 6<sup>TH</sup> AND EVERY FOLLOWING 6<sup>TH</sup> ROW, 8 TIMES. (65 STS. TOTAL) WHEN SLEEVE MEASURES 20" TOTAL, BIND OFF ALL STS.

**FINISHING:**

SEW SHOULDER SEAMS TOGETHER AND SET IN SLEEVES BY SEWING THE BOUND OFF EDGE TO THE EDGE OF THE SWEATER AFTER THE ARMHOLE BIND OFFS AND SEW THE TOP 2" OF THE SLEEVE TO THE BOUND OFF STS. (SLEEVE WILL MEASURE 18" TO THE UNDERARM) SEW THE REMAINING 18" OF THE SLEEVE SEAM TOGETHER. NO NECK FINISHING IS REQUIRED BUT, IF YOU WOULD LIKE TO, A SINGLE CROCHET AROUND THE NECK EDGE.

**BUTTON LOOPS:**

CAST ON 10 STS AND THEN BIND OFF 10 STS. MAKE 5 OF THESE LOOPS AND SEW THEM ON EVENLY FROM THE NECK EDGE TO THE TOP OF THE RIB AND ABOUT 1 ½" IN FROM THE EDGE. CAST ON 3 STS, KNIT INTO EACH STS AND TURN. KNIT & PURL INTO EACH ST. TURN. KNIT & PURL INTO EACH ST. AND TURN. KNIT 2 TOGETHER TO END OF ROW, TURN. KNIT 2 TOGETHER TO END OF ROW, TURN. SLIP 1 ST., KNIT 2 TOGETHER AND PASS SLIPPED STITCH OVER AND FASTEN OFF. MAKE 5 OF THESE BUTTONS. SEW THE BUTTONS ON OPPOSITE THE LOOPS ON THE OTHER FRONT.