



Category: Knitted Sweaters and Tops \ Knitted Tops

PAGE 1


FW275


Ultra Pima Fine
Candlewick Camisole | by Cheryl Toy


Chart Key:


CANDLEWICK CAMISOLE Chart A by Cheryl Toy


Legend:


 **knit**
knit stitch

 **k2tog**
Knit two stitches together as one stitch

 **yo**
Yarn Over

 **purl**
purl stitch

 **ssk**
Slip one stitch as if to knit, Slip another stitch as if to knit.
Insert left-hand needle into front of these 2 stitches and knit
them together

 **Central Double Dec**
Slip first and second stitches together as if to knit. Knit 1
stitch. Pass two slipped stitches over the knit stitch.





Category: Knitted Sweaters and Tops \ Knitted Tops

Ultra Pima Fine
Candlewick Camisole | by Cheryl Toy

Chart A:

CANDLEWICK CAMISOLE Chart A by Cheryl Toy

31	30	29	28	27	26	25	24	23	22	21	20	19	18	17	16	15	14	13	12	11	10	9	8	7	6	5	4	3	2	1					
					•										•										•							20			
		○	/	•	\		○				○	/	•	\	○				○	/	•	\	○		/	•	\	○				19			
				•											•										•							18			
		○	/	•	\		○		○		/	•	\	○		○			/	•	\	○		/	•	\	○					17			
					•				•					•					•					•								16			
			○	∧	○				•				○	∧	○				•					○	∧	○						15			
					•				•					•					•					•									14		
			○	/		\	○					○	/		\	○				○	/		\	○		/		\	○				13		
					•				•					•					•					•									12		
	\	○					○	/	•	\	○				○	/	•	\	○			○	/	•	\	○			○	/			11		
					•				•					•					•					•										10	
		\	○			○	/	•	\	○			○			○	/	•	\	○			○	/	•	\	○			○	/			9	
					•				•					•					•					•										8	
		\	○		○	/	•	\		○		○			/	•	\		○		○	/	•	\		○		○	/					7	
	\	○			•				•					•					•					•										6	
	\	○			•			○	∧	○				•				○	∧	○				•			•			○	/			5	
					•				•					•					•					•										4	
	\	○			•			○	/		\	○			○	/		\	○			○	/		\	○			○	/				3	
					•				•					•					•					•											2
	\	○			•			○	/		\	○			○	/		\	○			○	/		\	○			○	/					1

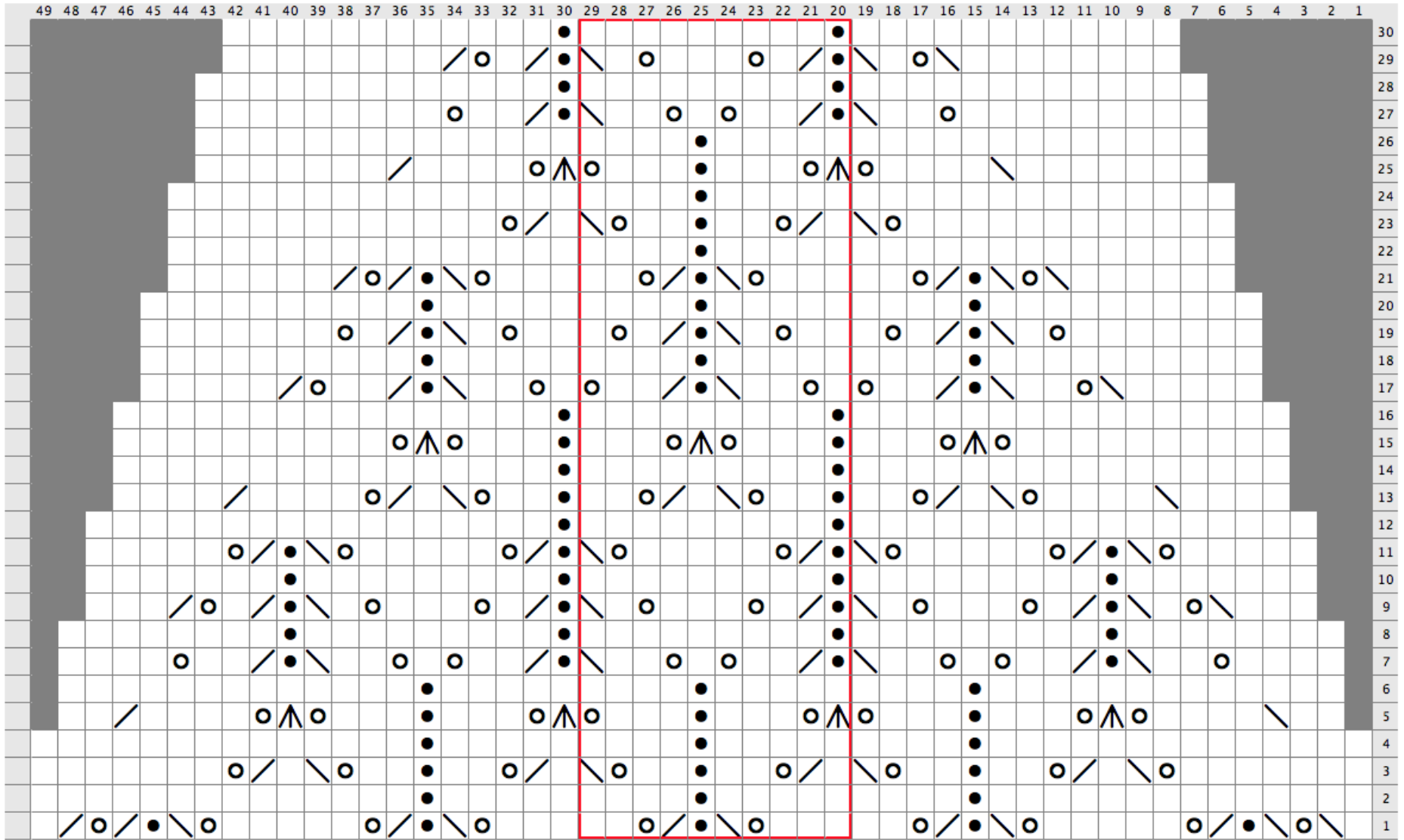


Category: Knitted Sweaters and Tops \ Knitted Tops

Ultra Pima Fine
Candlewick Camisole | by Cheryl Toy

Chart B:

CANDLEWICK CAMISOLE Chart B by Cheryl Toy



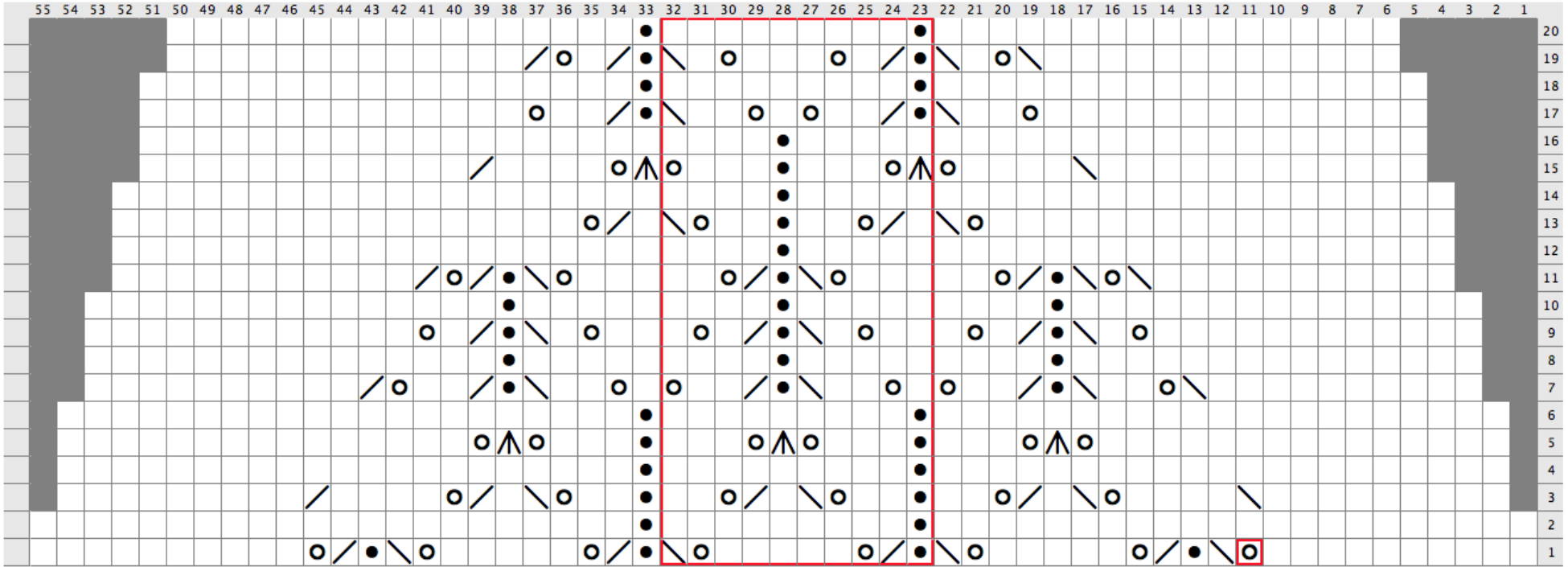


Category: Knitted Sweaters and Tops \ Knitted Tops

Ultra Pima Fine
Candlewick Camisole | by Cheryl Toy

Chart C:

CANDLEWICK CAMISOLE Chart C



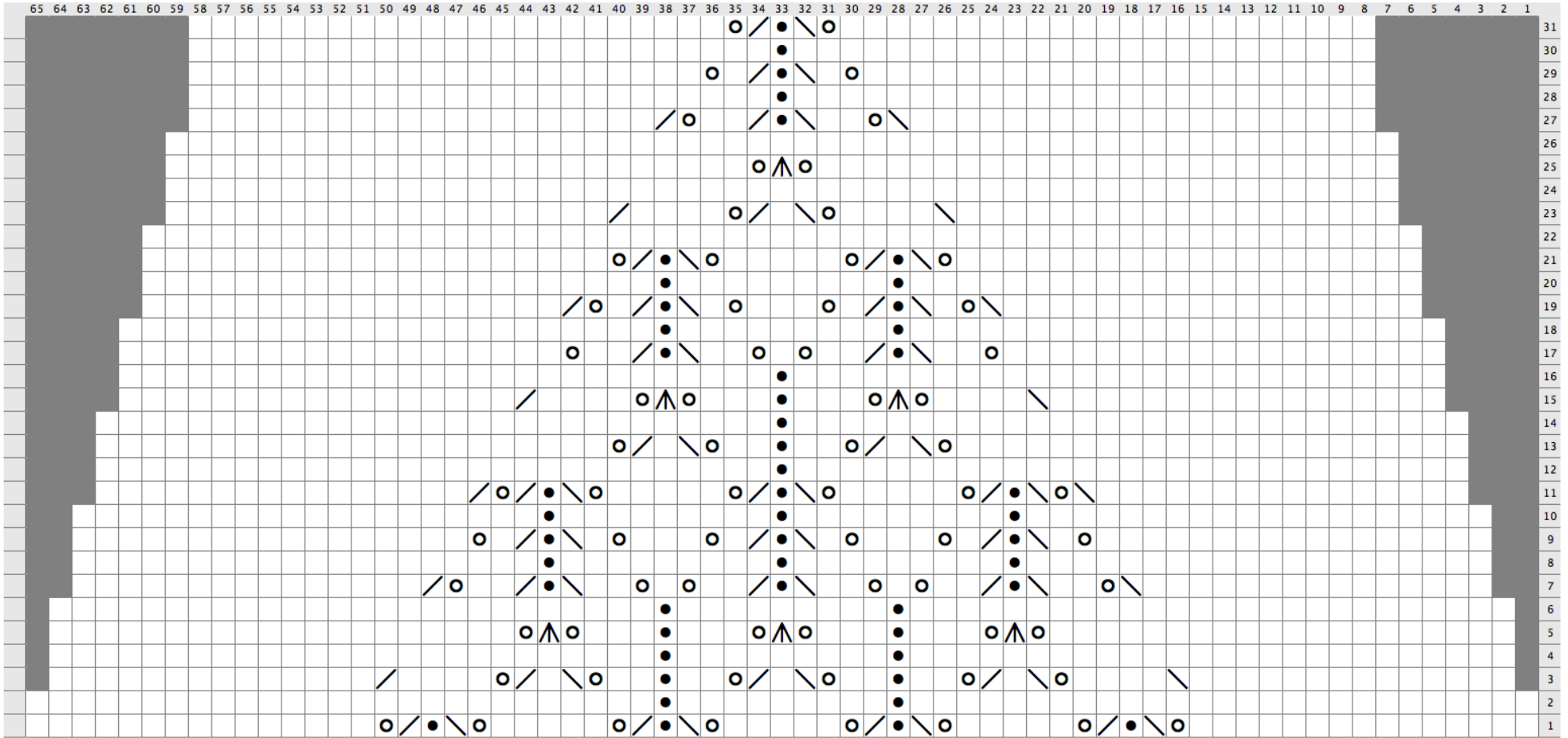


Category: Knitted Sweaters and Tops \ Knitted Tops

Ultra Pima Fine
Candlewick Camisole | by Cheryl Toy

Chart D:

CANDLEWICK CAMISOLE Chart D by Cheryl Toy





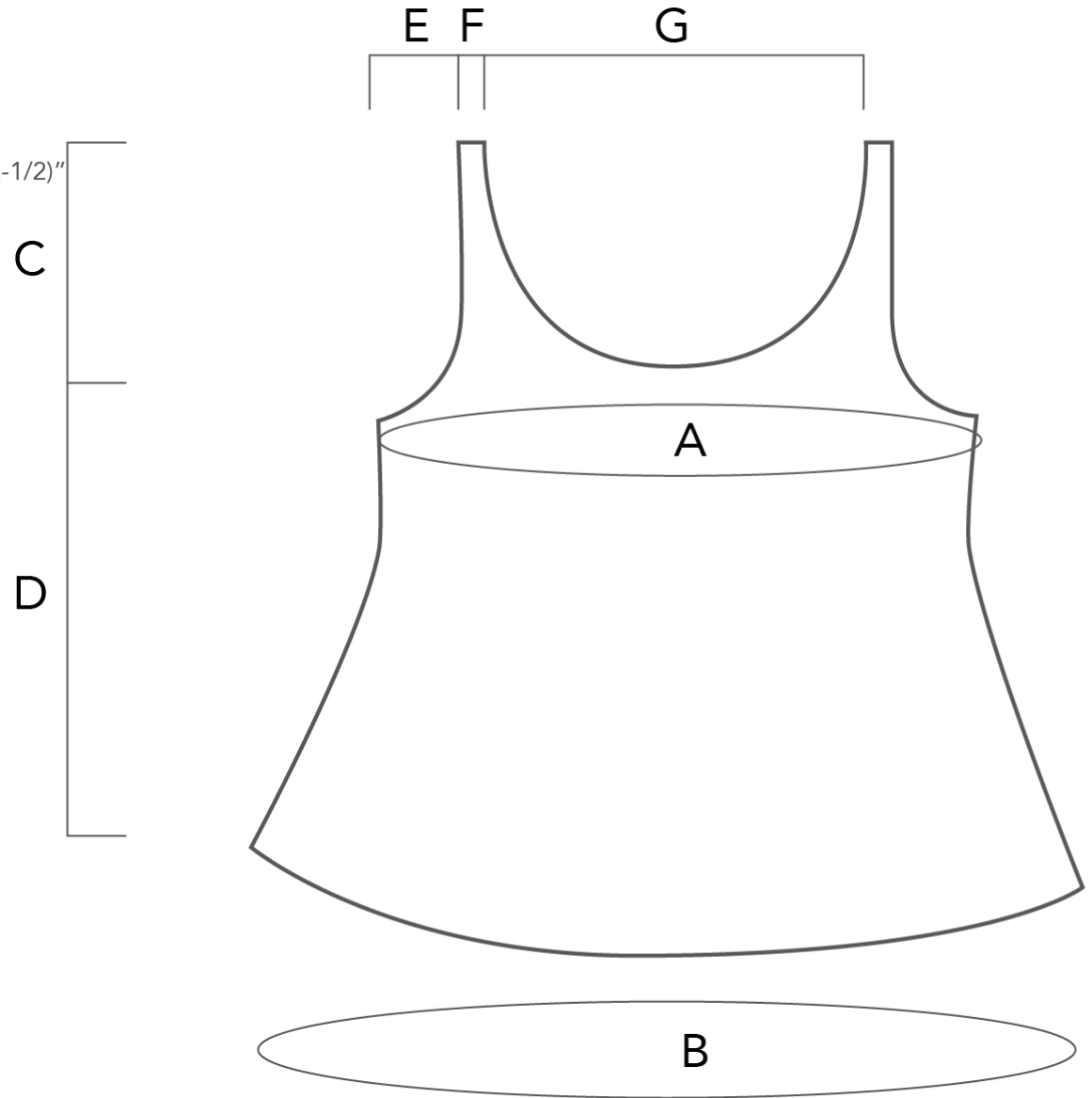
Category: Knitted Sweaters and Tops \ Knitted Tops

Ultra Pima Fine
Candlewick Camisole | by Cheryl Toy

Schematic:

FINISHED GARMENT MEASUREMENTS:

- A) Bust: 32 (36, 40, 44, 48, 52)"
- B) Hem: 43-1/4 (48, 51-1/4, 55-1/4, 59-1/4, 63)"
- C) Armhole Depth: 7 (7-1/2, 8, 8-1/2, 9, 9-1/2)"
- D) Length: 12-3/4 (13-1/4, 13-1/2, 13-3/4, 14-1/4, 14-1/2)"
- E) Armhole inset 2-1/4 (2-1/2, 3, 3, 4, 5)"
- F) Strap width (before edging): 1-1/4 (1-3/4, 1-3/4, 2-1/2, 2-1/2, 2-1/2)"
- G) Neck width: 9 (10, 10-1/4, 10-3/4, 11, 11-1/4)"



Thank you for downloading our free pattern. For more ideas and inspiration, visit us online at <http://www.cascadeyarns.com> and [blog http://cascadeyarns.blogspot.com/](http://cascadeyarns.blogspot.com/)

Find Cascade Yarns on social:

