



FW110

Cascade Alpaca Lace Turtleneck



Designed by Jamie Besel

Lace Turtleneck

Designed by Jamie Besel

KNITTED MEASUREMENTS

BUST: 34 (36, 40, 44, 46)"
86(92, 102, 112, 117) CM
LENGTH: 23(23 1/2, 23 1/2, 25, 25 1/2)"
58(60, 60, 64, 65) CM

MATERIALS

5(5, 6, 7, 7)/50G SKEINS
(EACH APPROXIMATELY 437 YARDS/400M CASCADE
ALPACA LACE IN COLOR 1404.
NEEDLES: 7 U.S. (4.5MM) NEEDLES AND 7 U.S. DOUBLE POINTED NEEDLES OR
SIZE NEEDED TO OBTAIN GAUGE.

GAUGE

35 STS AND 28 ROWS TO 4" / 10CM USING SIZE 7 (4.5MM) NEEDLES.

FRONT

CAST ON 153 (161, 177, 197, 205) STS WITH SIZE 7 NEEDLES. WORK A SELVAGE STITCH ON EACH SIDE OF GARMENT (SELVAGE STS ARE INCLUDED IN NUMBERS). PURL ONE WRONG SIDE ROW. ON RIGHT SIDE, KNIT PATTERN I UNTIL THE PIECE MEASURES 3". ON THE NEXT RIGHT SIDE ROW PURL 44 (48, 56, 66, 70) STS, WORK PATTERN I FOR 19 STS, WORK PATTERN II FOR 41 ST, WORK PATTERN I FOR 19 STS THEN PURL 44 (48, 56, 66, 70) STS. WORK IN THIS PATTERN UNTIL THE PIECE MEASURES 15(15, 15, 15 1/2, 16)". PLACE A MARKER AT EACH SIDE SEAM. KNIT A SELVAGE EDGE ST, WORK A DECREASE ST, WORK IN PATTERN AND END THE ROW WITH A DECREASE ST AND A SELVAGE EDGE ST. REPEAT THIS EVERY 4TH ROW UNTIL THE PIECE MEASURES 19(19, 20, 20, 20)". FOR NECKLINE, BIND OFF THE CENTER FRONT 35(35, 39, 39, 39) STS. ATTACH A NEW SKEIN OF YARN AND WORK EACH NECK EDGE SIMULTANEOUSLY AS FOLLOWS. BIND OFF 1 ST AT EACH NECK EDGE FOR 6 ROWS AND CONTINUE TO KNIT UNTIL THE PIECE MEASURES 22 1/2(22 1/2, 23, 23, 23)".

BACK

FOR BACK PIECE, WORK AS FOR THE FRONT, OMITTING THE NECK EDGE BIND OFF. WORK IN PATTERN UNTIL THE GARMENT MEASURES 24 1/2(24 1/2, 25, 25 1/4, 25 1/2)" AND BIND OFF ENTIRE TOP EDGE.

SLEEVES

WITH SIZE 7 NEEDLES, CAST ON 49(53, 57, 61, 65) STS AND PURL 1 WRONG SIDE ROW. ON RIGHT SIDE ROW, KNIT PATTERN I UNTIL THE PIECE MEASURES 4". ON THE NEXT WRONG SIDE ROW, KNIT THE ENTIRE ROW WORKING IN A YARN OVER ST EVERY OTHER KNIT STITCH ENDING THE ROW WITH A KNIT ST. WORK A 1 ST INCREASE AT THE BEGINNING OF EACH ROW UNTIL THE PIECE MEASURES 7" AND EVERY 3RD ROW UNTIL THE PIECE MEASURES 9". CONTINUE TO WORK THE PIECE IN A REVERSE STOCKINETTE ST UNTIL THE PIECE MEASURES 19" AND BIND OFF THE TOP EDGE.

FINISHING

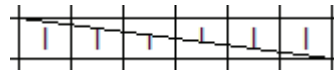
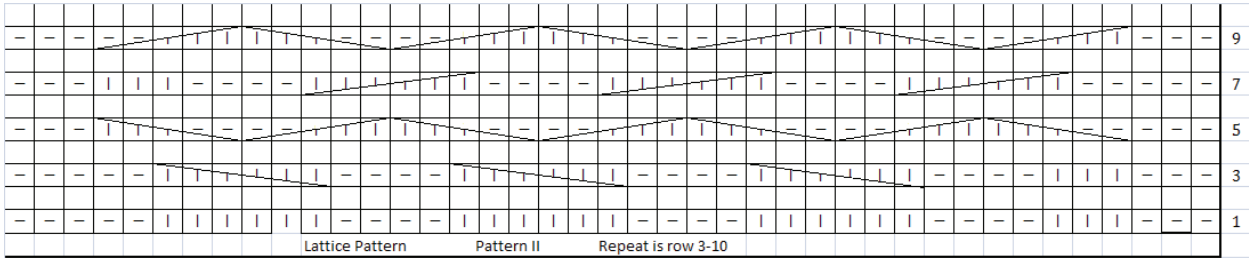
BLOCK PIECES LIGHTLY TO SPECIFIED MEASUREMENTS. SEW FRONT AND BACK SHOULDER SEAMS TOGETHER.

FINDING THE CENTER POINT ON THE SLEEVES, PLACE SLEEVES ON THE SHOULDER SEAM, RIGHT SIDES TOGETHER, AND SEW IN PLACE. SEW UNDERARMS AND SIDE SEAMS TOGETHER. WEAVE IN ALL EXCESS STRANDS OF YARN.

COLLAR

WITH SIZE 7 U.S. DOUBLE POINTED NEEDLES, PICK UP STITCHES AT THE NECKLINE AND PURL 1 ROW. THE STS THAT ARE PICKED UP MUST BE DIVISIBLE BY 4 PLUS 4 PLUS 3 FOR THE LACE PATTERN. WORK PATTERN I IN A CIRCLE UNTIL PIECE MEASURES 6". WORK A GARTER STITCH FOR THE LAST 3 ROWS. BIND OFF ENTIRE EDGE. BLOCK COLLAR.

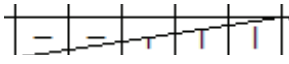
Jamie Besel - 510 W. Barnes, Lewistown, MT 59457- 406-538-7523 or 406-396-1473



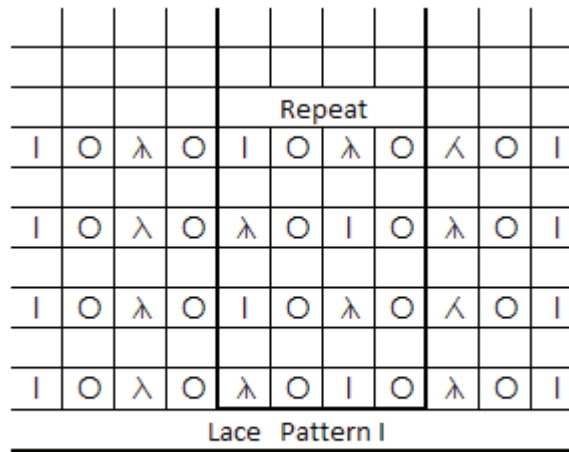
Place 3 knit sts on a cable needle and hold to the front of the work. Knit three sts and then knit the 3 sts on the st holder.



Place 3sts on a cable needle and hold in front of the work. Purl 2 sts, knit the 3 sts on the cable needle.



Place 2 purl sts on a cable needle and hold in the back of the work. Knit 3 sts, purl the 2 sts on the cable needle.



Knit stitch



Yarn over



Slip a st as if to purl, knit 2 sts, pss



Slip a stitch as if to purl, knit a st, pss



Knit 2 sts tog

*When instructed to slip a stitch as if to purl, keep the yarn to the back of the work.

6(6, 6 ½, 6 ½, 6 ½)"

5 ½(6, 6 ¾, 7 ¾, 8 ¼)"

