



DK231

Cascade Ultra Pima Cable and Rib Top



Designed By Fiona Ellis

Ultra Pima Cable and Rib Top

By Fiona Ellis

FINISHED MEASUREMENTS

Bust: 32 (34, 37, 40, 44, 48)" / 81 (86.5, 94, 101.5, 112, 122) cm.

Length to Shoulder: 23 (23½, 24, 25, 25, 26)" / 58.5 (60, 61, 63.5, 63.5, 66) cm.

MATERIALS

Cascade Ultra Pima, 220 yards / 200 meters per 3½ oz / 100 gram skein; 100% Pima Cotton.

Shade # 3705: 3 (3, 4, 4, 4, 5) skeins

Pair US size 6 / 4 mm needles

Circ US size 6 / 4 mm needle (16" / 40.5 cm long) for finishing

Cable needle

GAUGE

22 sts & 27 rows = 4" / 10 cm over St st.

Cable = 2.5" / 6.5 cm wide and the 28 rows measure 4" / 10 cm long

To save time and to ensure accurate sizing, check gauge.

ABBREVIATIONS / KEY TO CHART



Knit on RS rows, purl on WS rows.



Purl on RS rows, knit on WS rows.



M1p: Make one by picking up strand and purling into the back of the loop.



Ssk: Slip 2 stitches individually as if to knit, then knit those 2 stitches together through the back of loops.



K2tog: Knit 2 stitches together.



P2tog: Purl 2 stitches together.



Purl into front and back of strand lying between stitch just worked and next stitch.



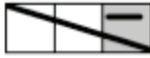
T2F: Slip next st onto CN and hold at front of work, p1 from left needle, k1 from CN.



T2B: Slip next st onto CN and hold at back of work, k1 from left needle, p1 from CN.



T3B: Slip next st onto CN and hold at back of work, k2 from left needle, then p1 from CN.



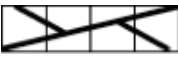
T3F: Slip next 2 sts onto CN and hold at front of work, p1 from left needle, then k2 from CN.



T4B: Slip next st onto CN and hold at back of work, k3 from left needle, then p1 from CN.



T4F: Slip next 3 sts onto CN and hold at front of work, p1 from left needle, then k3 from CN.



C4BR: Slip next st onto CN and hold at back of work, k3 from left needle, k1 from CN.



C4FL: Slip next 3 sts onto CN and hold at front of work, k1 from left needle, then k3 from CN.



T5B: Slip next st onto CN and hold at back of work, k4 from left needle, then p1 from CN.



T5F: Slip next 4 sts onto CN and hold at front of work, p1 from left needle, then k4 from CN.



C5Binc: Slip next st onto CN and hold at back of work, k4 from left needle, knit into front and back of st from CN.



C5Finc: Slip next 4 sts onto CN and hold at front of work, knit into front and back of next st on left needle, then k4 from CN.

BACK

Using US size 6 / 4 mm needles cast on 93 (97, 107, 115, 125, 135) sts. Work 4 rows in seed st.

Establish cable pattern:

Row 1: Following row 11 (7, 7, 3, 3, 1) for both cable patts, p8 (10, 13, 16, 19, 22), work Cable A over following 16 sts, p45 (45, 49, 51, 55, 59) work Cable B over next 16 sts, p8 (10, 13, 16, 19, 22).

Row 2: Following row 12 (8, 8, 4, 4, 2) for both cable patts, k8 (10, 13, 16, 19, 22), work Cable B, k41 (45, 51, 55, 61, 71) work Cable A, k8 (10, 13, 16, 19, 22).

Cont working cable patt in sequence as established until Back meas 3 (3½, 3½, 4, 4¼, 4½)" / 8 (9, 9, 10, 11, 11.5) cm from beg, end with a RS row facing for next row.

Shape waist:

Dec row: P1, p2tog, work in patt to last 3 sts, p2togtbl, p1. 91 (95, 105, 113, 123, 133) sts rem.
Work 5 rows even in patt.

Rep the last 6 rows 3 more times, plus dec row once more. 83 (87, 97, 105, 115, 125) sts rem.
Work 7 rows even in patt.

Inc row: P1, m1p, work in patt to last st, m1p, p1. 85 (89, 99, 107, 117, 125) sts.

Work 5 rows even in patt.

Rep the last 6 rows, 3 more times, plus inc row once more. 93 (97, 107, 115, 125, 135) sts.

Work even in patt until Back meas 14½ (15, 15, 15½, 15½, 16)" / 37 (38, 38, 39.5, 39.5, 40.5) cm from beg, ending with a RS row facing for next row.

Shape armholes:

Cont in patt bind off 3 sts at beg of next 4 rows and 2 sts at beg of following 2 rows. Then dec 1 st at each end of next RS row. 75 (79, 89, 97, 107, 117) sts rem.

Cont even in patt until back meas 7½ (7½, 8, 8½, 8½, 9)" / 19 (19, 20.5, 21.5, 21.5, 23) cm from beg of armhole shaping, end with a RS row facing for next row.

Shape shoulders:

Cont in patt bind off 5 (6, 7, 8, 9, 10) sts at beg of following 4 rows and 5 (5, 6, 7, 8, 9) sts at beg of following 2 rows. Bind off rem 45 (45, 49, 51, 55, 59) sts.

FRONT

Using US size 6 / 4 mm needles cast on 93 (97, 107, 115, 125, 135) sts. Work 4 rows in seed st.

Establish cable pattern:

Row 1: Following row 11 (7, 7, 3, 3, 1) for both cable patts, p30 (32, 37, 41, 46, 51) work Cable A over following 16 sts, p1, work Cable B over next 16 sts, p30 (32, 37, 41, 46, 51).

Row 2: Following row 12 (8, 8, 4, 4, 2) for both cable patts, k30 (32, 37, 41, 46, 51), work Cable B, k1, work Cable A, k30 (32, 37, 41, 46, 51).

Cont working cable patts in sequence as est until Front meas 3 (3½, 3½, 4, 4¼, 4½)" / 8 (9, 9, 10, 11, 11.5) cm from beg, end with a RS row facing for next row.

Shape waist:

Dec row: P1, p2tog, work in patt to last 3 sts, p2togtbl, p1. 91 (95, 105, 113, 123, 133) sts rem.
Work 5 rows even in patt.

Rep the last 6 rows 3 more times, plus dec row once more. 83 (87, 97, 105, 115, 125) sts rem.

Work 7 rows even in patt.

Inc row: P1, m1p, work in patt to last st, m1p, p1. 85 (89, 99, 107, 117, 127) sts.

Work 5 rows even in patt.

Rep the last 6 rows, 3 more times, plus inc row once more. 93 (97, 107, 115, 125, 135) sts.

Work even in patt until Front meas approx 14½ (15, 15, 15½ 15½, 16)'' / 37 (38, 38, 39.5, 39.5, 40.5) cm from beg, ending with row 21 of cable facing for next row.

Shape armholes:

Next row (RS): Bind off 3 sts at beg of row, purl to beg of Cable A placement, p5, T4F, T2B, p4, k1, p1, k1, p4, T2F, T4B, p5, purl to end.

Next WS row: Bind off 3 sts at beg of row, knit to beg of Cable B placement, k6, p4, k5, p1, k1, p1, k5, p4, k6, knit to end. 87 (91, 101, 109, 119, 129) sts rem.

Next RS row: Bind off 3 st at beg of row, purl to beg of Cable A placement, p6, T5F, p4, k1, p1, k1, p4, T5B, p6, purl to end.

Next WS row: Bind off 3 sts at beg of row, knit to beg of Cable B placement, k7, p4, k4, p1, k1, p1, k4, p4, k7, knit to end. 81 (85, 95, 103, 113, 123) sts rem.

Next RS row: Bind off 2 st at beg of row, purl to beg of Cable A placement, p6, T4B, k1, p3, T2B, p1, T2F, p3, k1, T4F, p6, purl to end.

Next WS row: Bind off 2 sts at beg of row, knit to beg of Cable B placement, k6, p3, k1, p1, (k3, p1) x3, k1, p3, k6, knit to end. 77 (81, 91, 99, 109, 119) sts rem.

Next RS row: P1, p2tog, purl to beg of Cable A placement, p5, T4B, p1, k1, p2, T2B, p3, T2F, p2, k1, p1, T4F, p5, purl to last 3 sts p2togtbl, p1. 75 (79, 89, 97, 107, 117) sts rem.

Next WS row: Knit to beg of Cable B placement, k5, p3, (k2, p1) twice, k5, (p1, k2) twice, p3, k5, knit to end.

Next RS Row: P23 (25, 30, 34,39, 44) p2togtbl, T3B, (k1, p2) x3, slip next st (center st) onto a safety pin, turn, leave rem 37 (39, 44, 48, 53, 58) sts on a spare needle for RHS.

Cont on the sts for LHS only:

WS row: (K2, p1) x3, k1, p2, k2togtbl, knit to end.

RS Row: P22 (24, 29, 33, 38, 43), p2togtbl, T3B, p1, (k1, p2) x3.

Next WS row: (K2, p1) x3, k2, p2, knit to end.

Next RS row: P20 (22, 27, 31, 36, 41), p2togtbl, T2B, (k1, p2) x4.

Next WS row: (K2, p1) x4, k1, p1, knit to end.

Next RS row: P18 (20, 25, 29, 34, 39), p2togtbl, T2B, p1, (k1, p2) x4. 32 (34, 39, 43, 48, 53) sts rem.

WS row: (K2, p1) x5, knit to end.

RS row: Purl to last 17 sts, p2togtbl, (k1, p2) x5.

Cont rep the last 2 rows (dec 1 st each RS row) until 15 (17, 20, 23, 26, 29) sts rem. Work even in patt until Front meas the same as the Back before shoulder shaping, end with a RS row facing for next row.

Cont in patt, bind off 5 (6, 7, 8, 9, 10) sts at beg of next row. Work WS row even.

Rep the last 2 rows once more. Bind off rem 5 (5, 6, 7, 8, 9) sts.

Return to sts on spare needle, rejoin yarn, (p2, k1) x3, T3F, p2tog, purl to end.

WS row: K22 (24, 30, 34, 39, 44), k2tog, p2, k1, (p1, k2) x3.

RS row: (P2, k1) x3, p1, T3F, p2tog, purl to end.

Next WS row: K21 (23, 29, 33, 38, 43), p2, k2, (p1, k2) x3.

Next RS row: (P2, k1) x4, T2F, p2tog, purl to end.

Next WS row: K19 (21, 27, 31, 26, 41), p1, k1, (p1, k2) x4.

Next RS row: (P2, k1) x4, p1, T2F, p2tog, purl to end.

WS row: Knit to last 15 sts, (p1, k2) x5.

RS row: (P2, k1) x5, p2tog, purl to end.

Cont rep the last 2 rows (dec 1 st each RS row) until 15 (17, 20, 23, 26, 29) sts rem. Work even in patt until Front meas the same as the Back before shoulder shaping, end with a WS row facing for next row.

Cont in patt, bind off 5 (6, 7, 8, 9, 10) sts at beg of next row. Work RS row even.

Rep the last 2 rows once more. Bind off rem 5 (5, 6, 7, 8, 9) sts.

FINISHING

Weave in all ends and block pieces to given dimensions.

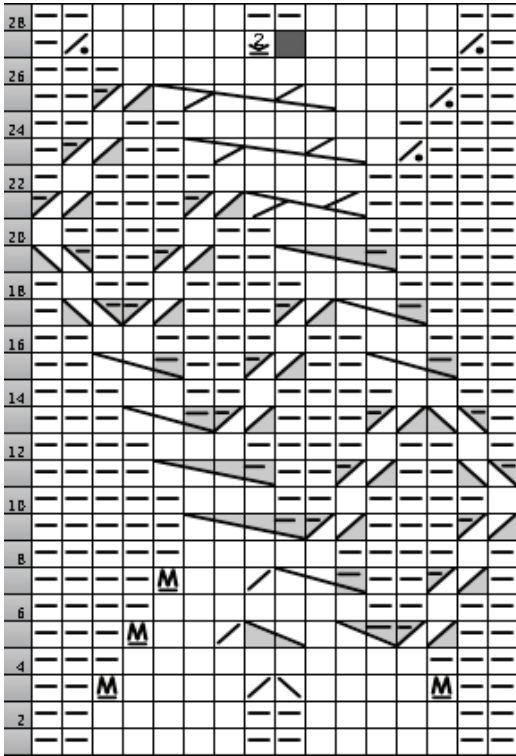
Join both shoulder seams.

Using circ US size 6 / 4 mm needle, with RS facing, pick up and knit 78 (78, 84, 88, 88, 94) sts around armhole edge. Knit 1 row. Bind off all sts knitwise.

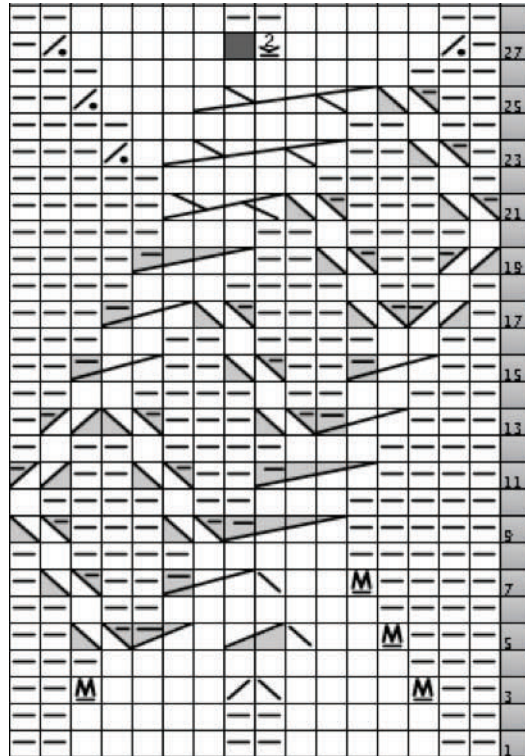
Rep for 2nd armhole.

Using circ US size 6 / 4mm needle, beg at left shoulder, with RS facing and pick up and knit 29 (29, 31, 33, 33, 35) sts down left front neck, knit st on safety pin at CF, then pick up and knit 29 (29, 31, 33, 33, 35) sts up right front neck and 40 (40, 44, 46, 50, 54) sts across back neck. 99 (99, 107, 113, 117, 125) sts total. Knit 1 row. Bind off all sts knitwise.

CABLE A



CABLE B



CABLE A

Row 1 (RS): P2, (k5, p2) twice.

Row 2: (K2, p5) twice, k2.

Row 3: P2, m1p, k4, ssk, k2tog, k4, m1p, p2.

Row 4: K3, p10, k3.

Row 5: P2, T2B, T5F, k2tog, k2, m1p, p3.

Row 6: K4, p7, k2, p1, k2.

Row 7: P1, T2B, p2, T3F, k2tog, k2, m1p, p4.

Row 8: K5, p5, k4, p1, k1.

Row 9: T2B, p3, T2B, T4F, p5.

Row 10: K5, p3, k2, p1, k4, p1.

Row 11: T2F, p2, T2B, p2, T4F, p4.

Row 12: K4, p3, k4, p1, k2, p1, k1.

Row 13: P1, T2F, T2B, p3, T2B, T3F, p3.

Row 14: K3, p2, k2, p1, k4, p2, k2.
Row 15: P2, T3F, p2, T2B, p2, T3F, p2.
Row 16: K2, p2, k4, p1, k2, p2, k3.
Row 17: P3, T3F, T2B, p3, T2B, T2F, p1.
Row 18: K1, p1, k2, p1, k4, p3, k4.
Row 19: P4, T4F, p2, T2B, p2, T2F.
Row 20: P1, k4, p1, k2, p3, k5.
Row 21: P5, C4FL, T2B, p3, T2B.
Row 22: K1, p1, k4, p5, k5.
Row 23: P3, p2tog, k1, C5Finc, p2, T2B, p1.
Row 24: K2, p1, k2, p7, k4.
Row 25: P2, p2tog, k3, C5Finc, T2B, p2.
Row 26: K3, p10, k3.
Row 27: P1, p2tog, k5, purl into front and back of strand lying between sts, k5, p2tog, p1.
Row 28: Rep row 2.

CABLE B

Row 1 (RS): P2, (k5, p2) twice.
Row 2: K2, (p5, k2) twice.
Row 3: P2, m1p, k4, ssk, k2tog, k4, m1p, p2.
Row 4: K3, p10, k3.
Row 5: P3, m1p, k2, ssk, T5B, T2F, p2.
Row 6: K2, p1, k2, p7, k4.
Row 7: P4, m1p, k2, ssk, T3B, p2, T2F, p1.
Row 8: K1, p1, k4, p5, k5.
Row 9: P5, T4B, T2F, p3, T2F.
Row 10: P1, k4, p1, k2, p3, k5.
Row 11: P4, T4B, p2, T2F, p2, T2B.
Row 12: K1, p1, k2, p1, k4, p3, k4.
Row 13: P3, T3B, T2F, p3, T2F, T2B, p1.
Row 14: K2, p2, k4, p1, k2, p2, k3.
Row 15: P2, T3B, p2, T2F, p2, T3B, p2.
Row 16: K3, p2, k2, p1, k4, p2, k2.
Row 17: P1, T2B, T2F, p3, T2F, T3B, p3.
Row 18: K4, p3, k4, p1, k2, p1, k1.
Row 19: T2B, p2, T2F, p2, T4B, p4.
Row 20: K5, p3, k2, p1, k4, p1.
Row 21: T2F, p3, T2F, C4BR, p5.
Row 22: K5, p5, k4, p1, k1.
Row 23: P1, T2F, p2, C5Binc, k1, p2tog, p3.
Row 24: K4, p7, k2, p1, k2.
Row 25: P2, T2F, C5Binc, k3, p2tog, p2.

Row 26: K3, p10, k3.

Row 27: P1, p2tog, k5, purl into front and back of strand lying between sts, k5, p2tog, p1.

Row 28: Rep row 2.

Rep rows 1-28 for patt.