



DK224

Cascade 220 Sport
Swirl Hat



Designed by Patti Waters

220 Sport Swirl Hat

by Patti Waters

Materials: 3 Skeins Cascade 220 Sport, 2 Color # 8886 (MC) and 1 Color # 7809 (CC), 100% Wool, 150 m, 50 g, US # 5/3.75 mm circular (16" length or smaller) and DPNs

Pattern:

With main color cast on 144 sts, and join for working in the round. Work in k1 p1 rib all the way around until piece measures 2". Work in st st until piece measures 4.5". Work 48 chart sts 3 times around, and work rows 1-15 of chart once. Work in st st for 3/4".

Decreases rounds (note: when the sts no longer fit all the way around on the circular needle move them to three dpns)

1: (k6 k2tog) repeat to the end of the round.

2 & 3: k all sts

4: (k5 k2tog) repeat to the end of the round.

5 & 6: k all sts

7: (k4 k2tog) repeat to the end of the round.

8 & 9: k all sts

10: (k3 k2tog) repeat to the end of the round.

11: k all sts

12: (k2 k2tog) repeat to the end of the round.

13: k all sts

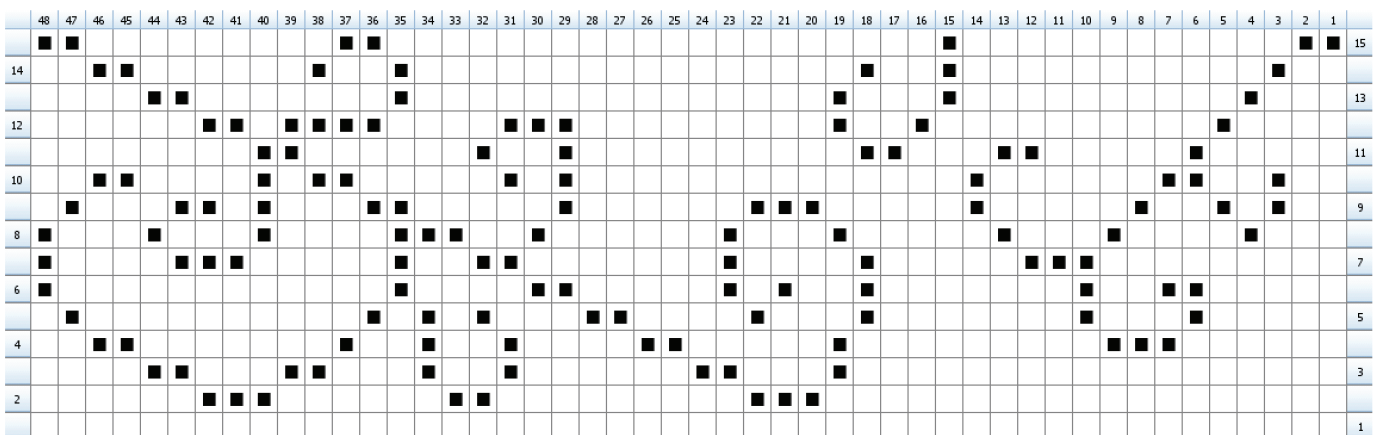
14: (k1 k2tog) repeat to the end of the round.

15: k all sts

16 & 17: (k2tog) repeat to the end of the round.

Cut working yarn and pull through all sts.

Chart:



Legend:

- knit
- color1

Created in KnitVisualizer (www.knitfoundry.com)

knit = MC
color 1 = CC