



DK210

Cascade 220 Superwash Sport Girls' Plaid Dress



Designed By Melissa Leapman

220 Superwash Sport Girl's Plaid Dress

Designed by Melissa Leapman

Skill Level

Intermediate

Sizes

Girl's size 2 (4, 6). Instructions are for smallest size, with changes for other sizes noted in parentheses as necessary.

Finished Measurements

Chest: 22 (24, 26)"

Length: 19 (20, 21)"

Materials

- Cascade's *220 Superwash Sport*, 5 (5, 6) hanks of #807 (A), 1 (1, 2) hanks of #802 (B), and 1 (1, 2) hanks of #821 (C)
- Knitting needles, sizes 4 and 5 or size needed to obtain gauge
- Four ½" buttons (JHB International's *Peoria Style #45143* was used on sample garment)
- Two stitch holders

Gauge

With larger needles in Stockinette St, 24 sts and 32 rows = 4". **To save time, take time to check gauge.**

Stitch Patterns

Border Pattern (*mult 5 sts*)

Row 1 (RS): With B, knit across.

Rows 2-4: As Row 1.

Row 5: With A, as Row 1.

Row 6: With A, purl across.

Rows 7 and 8: As Rows 5 and 6.

Row 9: *K2 with A, make a bobble with C (see Notes), K2 with A. Repeat from * across.

Row 10: With A, as Row 6.

Rows 11 and 12: With A, as Rows 5 and 6.

Rows 13-16: With B, as Rows 1-4.

Plaid Pattern

See chart.

Garter Stitch Pattern

Patt Row: Knit across.

Notes

- To make bobble: Knit into (front, back, front) of next st, turn; P1, (P1, yarn over, P1) all into next st, P1, turn; K5, turn; P2tog, P1, P2tog, turn; slip 2 sts at once knitwise, K1, p2sso.
- For fully-fashioned decreases: On RS rows, K2, SSK, work across in patt as established until 4 sts rem, ending row with K2tog, K2; on WS rows, P2, P2tog, work across in patt as established until 4 sts rem in row, ending row with SSP, P2.

Back

With smaller needles and B, CO 100 (115, 125) sts.

Beg Border Patt, and work even until Row 16 is completed.

Change to larger needles and A, beg Stockinette St Patt, and work even until piece measures approx 12 ½ (13 ½, 14 ½)" from beg, ending after WS row.

Change to smaller needles and B, beg Garter St Patt, and dec 35 (45, 50) sts evenly across first row—65 (70, 75) sts rem.

Beg with Row 2 and work Border Patt until Row 16 is completed, inc 0 (3, 4) sts evenly across last row—65 (73, 79) sts.

Beg Plaid Patt where indicated for your size, and cont even until piece measures approx 14 ½ (15, 15 ½)" from beg, ending after WS row.

Shape Armholes

BO 3 sts at beg of next two rows, BO 2 sts at beg of next two rows, then work fully-fashioned decreases (see Notes) each side every row three times, then every other row three times—43 (51, 57) sts rem.

Cont even in patt as established until piece measures approx 18 ½ (19 ½, 20 ½)" from beg, ending after WS row.

Shape Neck

Next Row (RS): Work across first 7 (11, 14) sts, join second ball of yarn and BO middle 29 sts, work to end row.

Work both sides at once with separate balls of yarn and dec 1 st each neck edge once—6 (10, 13) sts rem each side.

Cont even until piece measures approx 19 (20, 21)" from beg, ending after WS row.

Next Row (RS): BO 6 (10, 13) sts for right shoulder; slip rem 6 (10, 13) sts onto holder for left shoulder.

Front

Work same as for back until piece measures approx 16 (17, 18)" from beg, ending after WS row.

Shape Neck

Next Row (RS): Work across first 14 (18, 21) sts, join second ball of yarn and BO middle 15 sts, work to end row.

Work both sides at once with separate balls of yarn and BO 4 sts each neck edge once, BO 3 sts each neck edge once, then dec 1 st each neck edge every row once—6 (10, 13) sts rem each side.

Cont even until piece measures approx 18 (19, 20)" from beg, ending after WS row.

Slip 7 (10, 13) sts onto holder for left shoulder.

Cont even on right shoulder until piece measures approx 19 (20, 21)" from beg, ending after WS row.

BO.

Finishing

Sew right shoulder seam.

Neckband

With RS facing, smaller needles, and B, pick up and knit 95 sts along neckline.

Beg with Row 2, beg Border Patt, and work even until Row 10 is completed.

Row 11: With A, K6, *slip 2 sts at once knitwise, K1, pssso, K7, repeat across to * until 9 sts remain, slip 2 sts at once knitwise, K1, pssso, K6—77 sts rem.

Work Rows 12-14 as written in the pattern.

Row 15: [K6, K2tog] nine times, K5.

Work Row 16 as written in the pattern.

BO.

Buttonband

With smaller needles and A, pick up and knit 9 sts along side of neckband then knit the 6 (10, 13) sts from back left shoulder holder—15 (19, 22) sts total.

Beg Garter St Patt, and work even until band measures approx 1" from beg.

BO.

Place markers for three evenly-spaced buttons along band.

Buttonhole Band

Work same as buttonband until band measures $\frac{1}{2}$ " from beg.

Make three buttonholes opposite button markers by working (K2tog, yarnover).

Complete same as for buttonband.

Overlap buttonhole band over buttonband and sew armhole ends tog.

Armhole bands

With smaller needles and B, pick up and knit 66 (70, 74) sts along armholes.

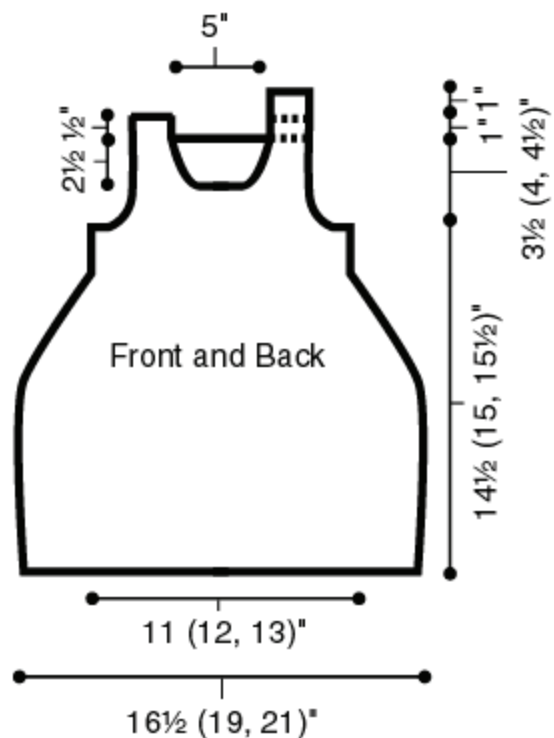
Beg Garter St Patt, and work even until band measures approx $\frac{3}{4}$ " from beg.

Work fully-fashioned decreases each side (see Notes) every other row three times—60 (64, 68) sts rem.

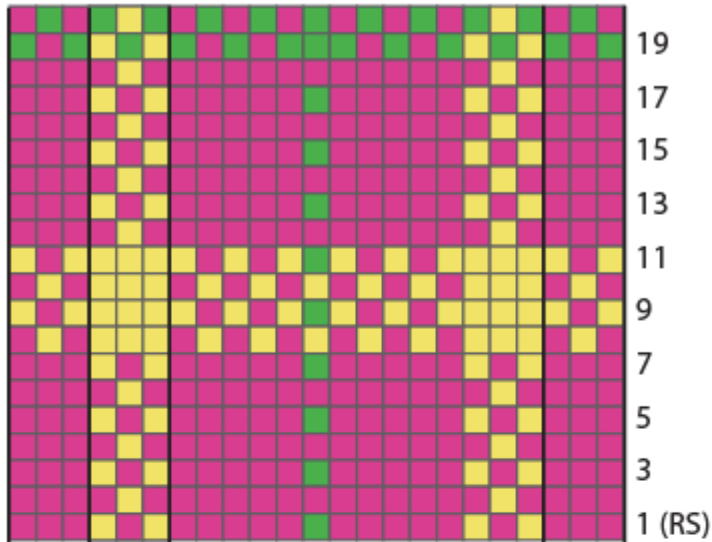
BO.

Sew side seams.

Sew on buttons.



Plaid Pattern



← 14-st repeat →
 Beg woman's S and L
 Beg Row 1 for woman's sleeves
 Beg child's size 4

End woman's S and L
 End Row 1 for woman's sleeves
 End child's size 4

Beg woman's XS, M, and 1X
 Beg child's sizes 2 and 6

End woman's XS, M, and 1X
 End child's sizes 2 and 6

Color Key = A
 = B
 = C

Stitch Key = K on RS; P on WS