

Cascade Ultra Pima  
Diamonds & Cables Top



Designed by Melissa Leapman

# Ultra Pima Diamond and Cable Top

Designed by Melissa Leapman

## Sizes

Small (Medium, Large, 1X, 2X). Instructions are for smallest size, with changes for other sizes noted in parentheses as necessary.

## Finished Measurements

Finished Bust Measurement: 36 (39, 42, 46, 50)"

Finished Length: 26"

## Materials

- Cascade Yarn's *Ultra Pima*, 7 (8, 8, 9) hanks
- One pair each of sizes 4 and 5 knitting needles or size needed to obtain gauge
- Cable needle

## Gauge

In Diamond and Cable Patt with larger needles, 40 sts and 48 rows = 6";

In Double Seed St Patt with larger needles, 24 sts and 32 rows = 4". **To save time, take time to check gauge.**

## Rib Pattern (*mult 2 sts*)

**Row 1 (RS):** K1, P1; repeat from \* across.

**Patt Row:** As Row 1.

## Double Seed St Pattern (*mult 2 + 1 sts*)

**Row 1 (RS):** \*K1, P1; repeat from \* across, ending row with K1.

**Row 2:** \*P1, K1; repeat from \* across, ending row with P1.

**Row 3:** As Row 2.

**Row 4:** As Row 1.

Repeat Rows 1-4 for patt.

## Diamond and Cable Pattern

See chart.

## Back

With smaller needles, CO 116 (124, 132, 144, 156) sts.

Beg Rib Patt, and cont even until piece measures approx 1 ½" from beg, ending after WS row, inc 1 st at end of last row—117 (125, 133, 145, 157) sts.

## Set Up Patts

Next Row (RS): Change to larger needles, work Row 1 of Double Seed St Patt across first 17 (21, 25, 31, 37) sts, place marker, work Row 1 of Diamond and Cable Patt across middle 83 sts, place marker, work Row 1 of Double Seed St Patt across to end row.

Cont even in patts as established until piece measures approx 12" from beg, ending after WS row.

## Increase for Sleeves

CO 11 (10, 10, 9, 8) sts at beg of next four rows, then CO 10 (10, 9, 9, 8) sts at beg of next four rows, working new sts in Double Seed St Patt as they accumulate—201 (205, 209, 217, 221) sts.

Cont even until piece measures approx 25" from beg, ending after WS row.

### **Shape Neck**

Cont patts as established, and BO middle 45 sts.

Work both sides at once with separate balls of yarn and dec 1 st each neck edge once—77 (79, 81, 85, 87) sts each side.

Cont even until piece measures approx 26" from beg, ending after WS row.

BO.

### **Front**

Same as back until piece measures approx 22 ½" from beg, ending after WS row.

### **Shape Neck**

Cont patts as established, and BO middle 19 sts.

Work both sides at once with separate balls of yarn and BO 4 sts each neck edge twice, BO 2 sts each neck edge once, then dec 1 st each neck edge every row four times—77 (79, 81, 85, 87) sts each side.

Complete same as back.

### **Finishing**

Sew left shoulder seam.

### **Neckband**

With RS facing and smaller needles, pick up and knit 140 sts around neckline.

Beg Rib Patt, and work even until band measures approx 1" from beg.

BO.

Sew right shoulder seam, including side of neckband.

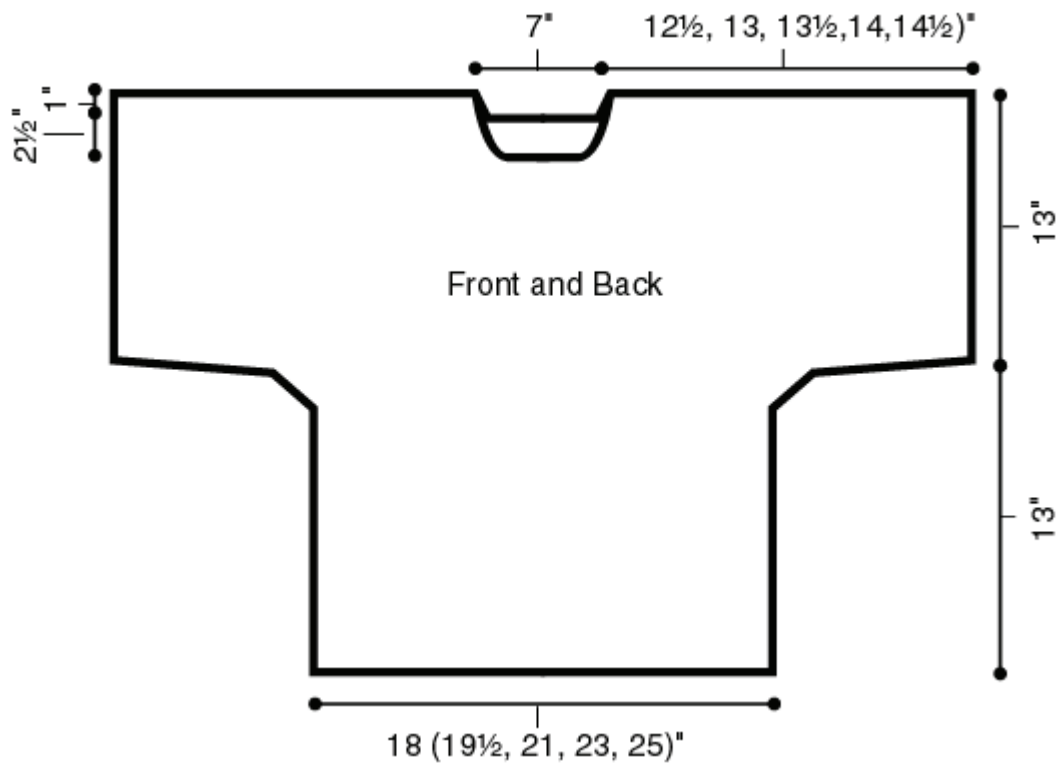
### **Sleeve Edging**

With RS facing and smaller needles, pick up and knit 166 sts along lower edge of sleeve.

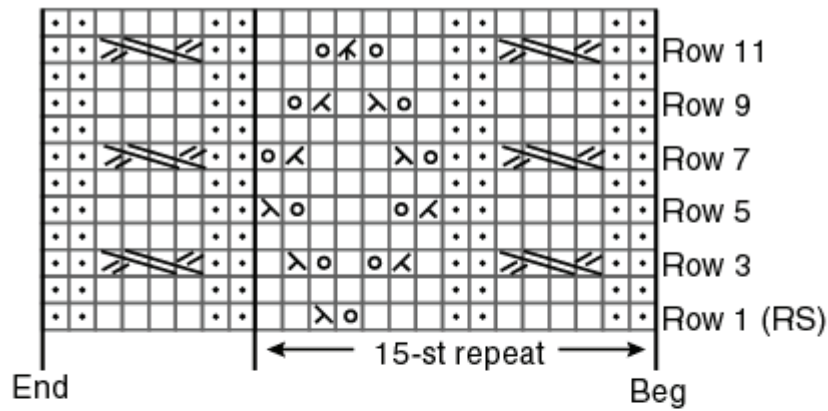
Beg Rib Patt, and work even until band measures approx ¾" from beg.

BO.

Sew side and sleeve seams.



### Diamond and Cable Pattern



Stitch Key

□ = K on RS; P on WS

• = P on RS; K on WS

o = Yarn over

∧ = K2tog

∨ = SSK

⋈ = K3tog

≡ = Slip 2 sts onto cn and hold in front; K2; K2 from cn