



DK140

## CASCADE ULTRA PIMA YEAR ROUND LITTLE CARDIGAN



DESIGNED BY MELISSA LEAPMAN

**Year Round Little Cardigan**  
**Designed by Melissa Leapman**  
**For Cascade Yarn**

**Sizes**

Small (Medium, Large, 1X). Instructions are for smallest size, with changes for other sizes noted in parentheses as necessary.

**Finished Measurements**

Finished Bust Measurement (Buttoned): 36 ½ (45 ½, 48 ½, 57)"  
Finished Length: 22"

**Materials**

Cascade Yarn's *Ultra Pima*, 5 (6, 7, 8) hanks of #3704  
One pair each of sizes 4 and 5 knitting needles or size needed to obtain gauge  
One 7/8" button (JHB International's *Bijan Style #30240* was used on sample garment)

**Gauge**

In Main Patt with larger needles, 22 sts and 32 rows = 4". **To save time, take time to check gauge.**

**Border Pattern** (*mult 16 + 1 sts*)

See chart.

**Main Pattern** (*mult 16 + 1 sts*)

See chart.

**Garter Stitch Pattern**

**Row 1 (RS):** Knit across.

**Patt Row:** As Row 1.

**Back**

With smaller needles, CO 97 (113, 129, 145) sts.

Beg Border Patt, and cont even until piece measures approx 1 ½" from beg, ending after WS row.

Change to larger needles, beg Main St Patt, and work even until piece measures approx 12" from beg, ending after WS row.

**Shape Armholes**

BO 8 (16, 16, 24) sts at beg of next two rows—81 (81, 97, 97) sts rem.

Cont even until piece measures approx 21" from beg, ending after WS row.

**Shape Shoulders**

BO 6 (6, 8, 8) sts at beg of next eight rows.

BO rem 33 sts for back of neck.

### **Left Front**

With smaller needles, CO 49 (65, 65, 81) sts.

Beg Border Patt, and cont even until piece measures approx 1 ½" from beg, ending after WS row.

Change to larger needles, beg Main St Patt, and work even until piece measures approx 12" from beg, ending after WS row.

### **Shape Armhole**

BO 8 (16, 16, 24) sts at beg of next row—41 (49, 49, 57) sts rem.

Cont even until piece measures approx 19" from beg, ending after RS row.

### **Shape Neck**

BO 8 sts at beg of next row, BO 4 sts at neck edge once (twice, once, twice), BO off 2 sts at neck edge 2 (4, 2, 4) times, then dec 1 st at neck edge once—24 (24, 32, 32) sts rem.

Cont even in patt as established until piece measures same as back to shoulders, ending after WS row.

### **Shape Shoulders**

BO 6 (6, 8, 8) sts at armhole edge four times.

BO.

### **Right Front**

Same as left front *except* reverse all shaping.

### **Sleeves**

With smaller needles, CO 97 sts.

Beg Border Patt, and cont even until piece measures approx 1 ½" from beg, ending after WS row.

Change to larger needles, beg Main Patt, and work even until piece measures approx 10 (10, 9, 9)" from beg, ending after WS row.

BO.

### **Finishing**

Sew shoulder seams.

**Buttonband**

With RS facing and smaller needles, pick up and knit 97 sts along left front.

Beg Garter St Patt, and work even until band measures approx 1" from beg.

BO.

Place marker for one button approx  $\frac{1}{4}$ " down from beg of front neck shaping.

**Buttonhole Band**

Same as buttonband along right front until band measures approx  $\frac{1}{2}$ " from beg.

**Next Row:** Make buttonhole opposite markers by binding off 3 sts.

**Next Row:** CO 3 sts over the bound-off sts of previous row.

Cont even until band measures approx 1" from beg.

BO.

**Collar**

With WS facing and smaller needles, pick up and knit 113 sts evenly along neck edge, beg and end approx  $\frac{1}{2}$ " from front edges.

Beg Border Patt, and work even until collar measure approx 2  $\frac{1}{2}$ " from beg.

Change to larger needles and cont even until collar measures approx 5" from beg.

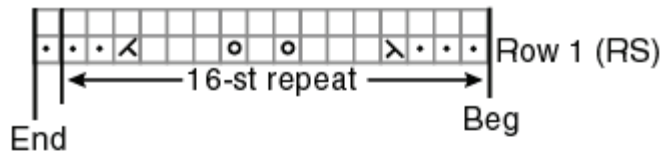
BO on RS row.

Set in sleeves.

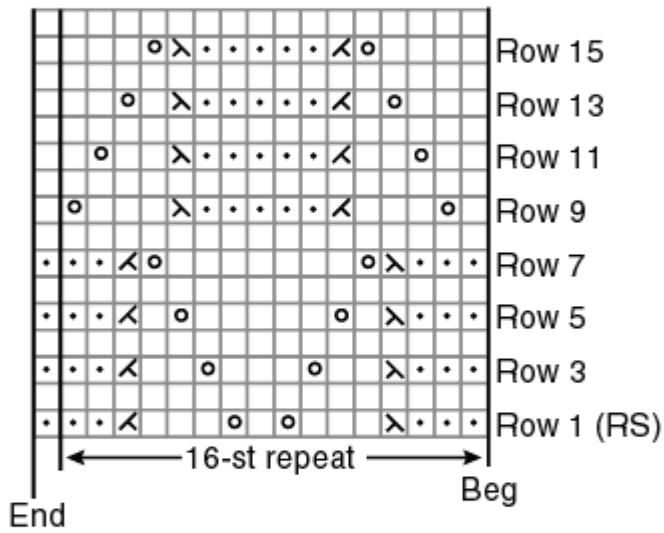
Sew side and sleeve seams.

Sew on button.

### Border Pattern



### Main Pattern



KEY  $\square$  = K on RS; P on WS

$\cdot$  = P on RS; K on WS

$\sphericalangle$  = K2tog

$\sphericalangle$  = SSK

$\circ$  = Yarn over

