



Springtime Tunic

Designed by
Melissa Leapman for Cascade Yarns



Cascade Cotton Rich DK

Springtime Tunic

Designed by Melissa Leapman for Cascade Yarns

Skill Level

Intermediate

Sizes

Small (Medium, Large, 1X, 2X). Instructions are for smallest size, with changes for other sizes noted in parentheses as necessary.

Finished Measurements

Bust: 36 (38 ½, 41, 43 ½, 46)"

Total length: 29 (29 ¼, 29 ½, 30, 30)"

Materials

Cascade Yarn's *Cotton Rich DK*, 11 (12, 13, 14, 15) hanks of #3077

One pair *each* of sizes 5 and 6 knitting needles or size needed to obtain gauge

Two cable needles

Gauge

In Border Patt with smaller needles, 26 sts and 32 rows = 4"

In Stockinette St Patt with larger needles, 22 sts and 30 rows = 4". **To save time, take time to check gauge.**

Stitch Patterns

Border Pattern (*mult 8 + 5 sts*)

See chart.

Stockinette St Pattern

Row 1 (RS): Knit across.

Row 2: Purl across.

Repeat Rows 1 and 2 for patt.

Garter St Pattern

Patt Row: Knit across.

Repeat Patt Row for patt.

Notes

Bobble = K into (front, back, front) of next st, turn; P1, (P1, yarn over, P1) all into next st, P1, turn; K5, turn; P2tog, P1, P2tog, turn; slip 2 sts at once knitwise, K1, p2sso.

For fully-fashioned decreases: On RS rows, K2, SSK, work across in patt as established until 4 sts rem, ending row with K2tog, K2; on WS rows, P2, P2tog, work across in patt as established until 4 sts rem in row, ending row with SSP, P2.

Back

With smaller needles, CO 102 (109, 116, 123, 130) sts.

Row 1 (RS): K5, *Bobble, K6. Repeat from * across, ending row with Bobble, K5.

Work four rows of Garter St Patt.

Next Row (WS): K2, *M1 knitwise, K7. Repeat from * across, ending row with M1, K2—117 (125, 133, 141, 149) sts.

Beg Border Patt, and work Rows 1-10 twice.

Work six rows of Garter St Patt, dec 18 (20, 20, 22, 22) sts evenly across first row—99 (105, 113, 119, 127) sts rem.

Change to larger needles, beg Stockinette St Patt, and cont even until piece measures approx 20 ½" from beg, ending after WS row.

Shape Armholes

BO 4 (4, 5, 5, 6) sts at beg of next two rows, BO 2 (2, 3, 4, 4) sts at beg of next two rows, then work fully-fashioned decreases (see Notes) each side every row 4 (8, 8, 8, 12) times, then every other row 5 (3, 4, 5, 3) times—69 (71, 73, 75, 77) sts rem.

Cont even in patt until piece measures approx 27 ½ (27 ¾, 28, 28 ½, 28 ½)" from beg, ending after WS row.

Shape Neck

Next Row (RS): Work across first 17 (18, 19, 20, 21) sts, join second ball of yarn and BO middle 35 sts, work across to end row.

Work both sides at once with separate balls of yarn, and dec 1 st each neck edge once—16 (17, 18, 19, 20) sts rem.

Cont even until piece measures approx 28 (28 ¼, 28 ½, 29, 29)" from beg, ending after WS row.

Shape Shoulders

BO 4 (4, 4, 5, 5) sts at beg of next six rows, then BO 4 (5, 6, 4, 5) sts at beg of next two rows.

Front

Work same as back until piece measures approx 23 (23 ¼, 23 ½, 24, 24)" from beg, ending after WS row.

Shape Neck

Next Row (RS): Work across first 26 (27, 28, 29, 30) sts; join second ball of yarn and BO middle 17 sts, work to end row.

Work both sides at once with separate balls of yarn, and BO 5 sts each neck edge once, BO 2 sts each neck edge twice, then dec 1 st each neck edge once—16 (17, 18, 19, 20) sts rem each side.

Cont even, if necessary, until piece measures same as back to shoulders.

Shape Shoulders

Work same as for back.

Sleeves

With smaller needles, CO 53 sts.

Row 1 (RS): K5, *Bobble, K6. Repeat from * across, ending row with Bobble, K5.

Work four rows of Garter St Patt.

Change to larger needles, beg Stockinette St Patt, and inc 1 st each side every tenth row 0 (0, 4, 10, 10) times, every twelfth row 0 (8, 7, 2, 2) times, every fourteenth row 2 (2, 0, 0, 0) times, then every sixteenth row 6 (0, 0, 0, 0) times—69 (73, 75, 77, 77) sts.

Cont even until sleeve measures approx 18 ½" from beg, ending after WS row.

Shape Cap

BO 4 (4, 5, 5, 6) sts at beg of next two rows, then work fully-fashioned decreases (see Notes) each side every fourth row 0 (0, 0, 0, 1) times, every other row 17 (16, 18, 21, 19) times, then every row 1 (4, 2, 0, 0) times—25 sts rem.

BO 3 sts at beg of next four rows—13 sts rem.

BO.

Finishing

Block pieces to measurements.

Sew left shoulder seam.

Neckband

With RS facing and smaller needles, pick up and knit 109 sts along neckline.

Beg Garter St Patt, and work even until neckband measures approx ½" from beg.

Next Row: Cont patt, and dec 11 sts evenly across—98 sts rem.

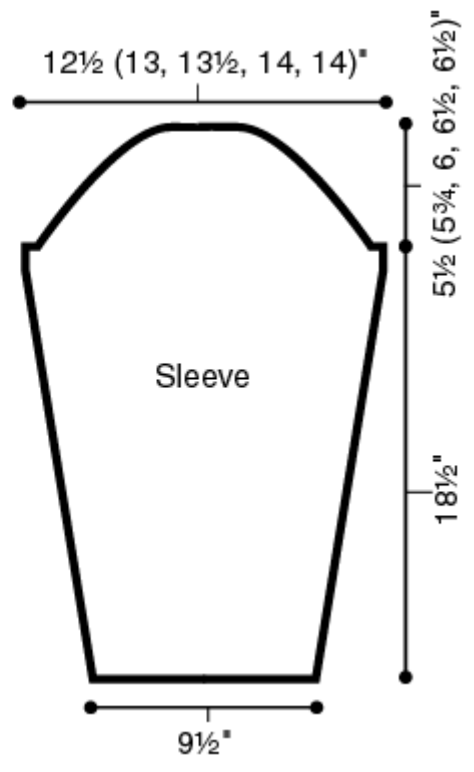
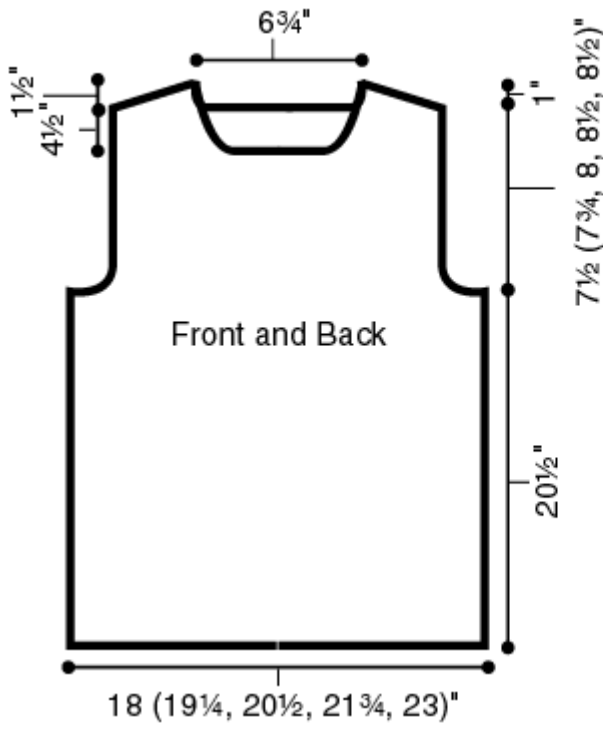
Work even until neckband measures approx ¾" from beg.

BO.

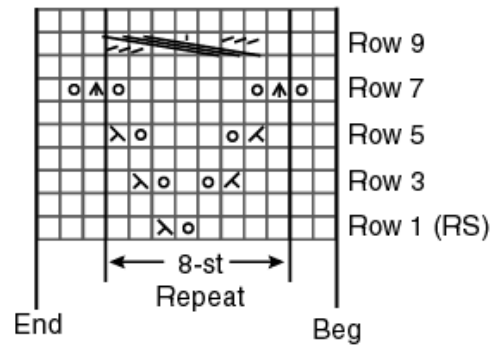
Sew right shoulder seam, including side of neckband.

Set in sleeves.

Sew sleeve and side seams.



Border Pattern



KEY □ = K on RS; P on WS


• = P on RS; K on WS

○ = Yarn over

∧ = K2tog

λ = SSK

▲ = Slip 2 sts at once knitwise; K1; p2sso

 = Slip 3 sts onto cn #1 and hold in front; slip next st onto cn #2 and hold in back; K3; K1 from cn #2; K3 from cn #1