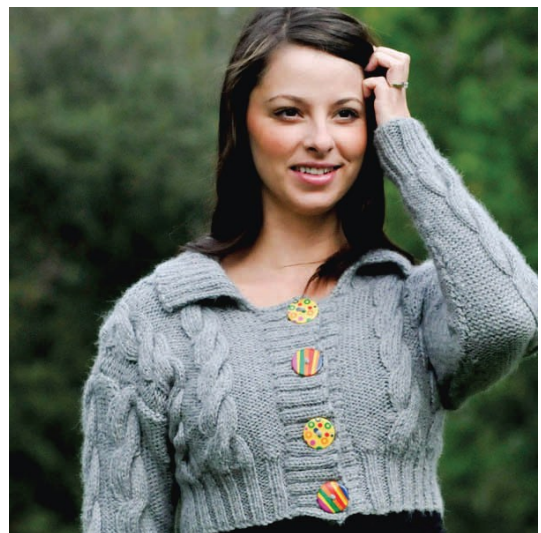


Baby Alpaca Chunky
Cabled Jacket



Designed by Marilyn Peters

Baby Alpaca Chunky Cable Jacket

designed by Marilyn Peters

<p>To fit sizes: Bust: 32" (34", 36", 38", 40") Length: 14" (14", 15", 16", 16") Sleeve Length: 19" (19", 19", 19", 20")</p> <p>Gauge: 5 sts x 6 rows = 1" using 6mm (US10) needles PLEASE CHECK YOUR GAUGE BEFORE BEGINNING THIS SWEATER <i>C1 – Place next 5 sts onto cable needle and leave at back of work, k5, then k5 from cable needle.</i></p>	<p>Materials: 7 (8, 9, 9) x 100g balls Baby Alpaca Chunky by Cascade Yarns – color 54 grey 1 pair each 5mm (US8) and 6mm (US10) needles 1 stitch holder 4 x 1 ¼" buttons</p> <p>Skill Level: Intermediate</p>
---	---

<p>BACK Using 5mm (US8) needles cast on 70 (76, 80, 86, 90) sts Work in double rib for 18 rows, inc. 25 (24, 25, 29, 30) sts evenly across the last row - 95 (100, 105, 115, 120) sts Change to 6mm (US10) needles and work in patt as foll: Row 1: P5, *k10, p5, rep. from * to the end of the row. Row 2: K5, *p10, k5, rep. from * to the end of the row. Rep. rows 1 and 2 three times. Row 9: P5, *C1, p5, rep. from * to the end of the row. Row 10: K5, *p10, k5, rep. from * to the end of the row. Rep. last 10 rows until back measures 14" (14", 15", 15", 16", 16"), finishing on wrong side row. Next row: BO 30 (32, 35, 36, 37) sts, patt 35 (36, 40, 43, 46) sts, BO 30 (32, 35, 36, 37) sts. Place middle sts on holder.</p> <p>RIGHT FRONT **Using 5mm (US8) needles cast on 26 (30, 34, 38, 42) sts. Work in double rib for 18 rows, inc. 12 sts evenly across the last row – 38 (42, 46, 50, 54) sts. Change to 6mm (US10) needles and work in patt as foll: ** Row 1: P8 (12, 16, 5, 9), *k10, p5, rep. from * to end of row Row 2: *K5, p10, rep from * to last 3 (12, 16, 5, 9) sts, k to end of row Rep. rows 1 and 2 three times Row 9: P8 (12, 16, 5, 9), *C1, p5, rep from * to end of row Row 10: *K5, k10, rep. from * to last 3 (12, 16, 5, 9) sts, k to end of row Rep. last 10 rows until front measures 11" (11", 12", 13", 13"), finishing on wrong side row. <i>Neck shaping:</i> Cast off 4 (4, 4, 5, 5) sts at beg next row. Dec. 1 st neck edge on every row to 30 (32, 35, 36, 37) sts. Work without shaping until front measures 14" (14", 15", 16", 16"). BO.</p> <p>LEFT FRONT Work the same as right front from ** to **. Row 1: *P5, k10, rep. from * to last 8 (12, 16, 5, 9) sts, p to end of row Row 2: K8 (12, 16, 5, 9), *p10, k5, rep. from * to end of row Rep. rows 1 and 2 three times Row 9: *P5, C1, *p5, C1, rep. from * to last 8 (12, 16, 5, 9) sts, p to end of row Row 10: K8 (12, 16, 5, 9), *p10, k5, rep. from * to end of row Rep. last 10 rows until front measures 11" (11", 12", 13", 13"), finishing on wrong side row. <i>Neck shaping:</i> BO last 4 (4, 4, 5, 5) sts and break off yarn. Turn and tie in new yarn, dec. 1 st at neck edge on every row to 30 (32, 35, 36, 37) sts. Work without shaping until front measures 14" (14", 15", 16", 16"). BO.</p>	<p>SLEEVES (make 2 the same) Using 5mm (US8) needles cast on 34 (38, 42, 46, 50) sts. Work in double rib for 18 rows, inc. 7 sts evenly across the last row - 41 (45, 49, 53, 57) sts. Change to 6mm (US10) needles, inc. 1 st at each end of 12th (12th, 6th, 6th, 6th) and every foll 6th rows, working in patt as foll: Row 1: P8 (10, 12, 14, 16), k10, p5, k10, p to end of row Row 2: K8 (10, 12, 14, 16), p10, k5, p10, k to end of row Rep. rows 1 and 2 three times (factoring in the inc. sts) Row 9: P to knit sts, C1, p5, C1, p to end of row Row 10: K to purl sts, p10, k5, p10, k to end of row Cont. increasing on every 6th row to 61 (65, 69, 73, 77) sts. Work 5 more rows. Inc. 15 (15, 17, 18, 20) sts evenly across the next row - 76 (80, 86, 91, 97) sts. Work without shaping until sleeve measures 19" (or length desired). BO loosely.</p> <p>FRONT AND NECK BANDS <i>Left Front Band</i> Using 5mm (US8) needles pick up 66 (66, 72, 78, 78) sts along left front. Work in double rib for 5 rows. Row 6: (<i>buttonhole row</i>): Rib 5 sts, *m2, p3tog, rib 15 (15, 17, 19, 19), rep. from * to last 4 sts, rib 4. Work 4 more rows in double rib. BO. <i>Right Front Band</i> Using 5mm (US8) needles pick up 66 (66, 72, 78, 78) sts along right front. Work in double rib for 10 rows. BO. <i>Neckband and Collar</i> Using 5mm (US8) needles, starting at right front neck edge and finishing at left front neck edge, pick up 90 (96, 102, 108, 112) sts. Work in double rib for 4 rows. Next row: Rib 9 sts, inc. 20 (22, 24, 26, 26) sts evenly across the next 72 sts - rib 9 - 110 (118, 126, 134, 138) sts. Work in double rib until collar measures 4 ½" (4 ½", 5", 6", 6"). BO.</p> <p>FINISHING Sew sleeves into place, Sew sleeve and side seams. Sew on buttons and tie in ends.</p>
---	---