



A129

Cloud 9  
Cabled Pullover



Designed by Melissa Leapman

# Cloud 9 Luscious Cabled Pullover

## Designed by Melissa Leapman

### Sizes

Small (Medium, Large, 1X). Instructions are for smallest size, with changes for other sizes noted in parentheses as necessary.

### Finished Measurements

Bust: 34 (41, 48 ½, 56)"

Total length: 22 (22 ½, 23, 23 ½)"

### Materials

Cascade Yarn's *Cloud 9*, 11 (12, 13, 14) balls of #152

One pair of sizes 7 and 8 knitting needles or size needed to obtain gauge

One cable needle

### Gauge

In Main Cable Patt with larger needles, 26 sts and 26 rows = 4";

In Sleeve Cable Patt with larger needles, 22 sts and 26 rows = 4". **To save time, take time to check gauge.**

### Main Cable Patt (*mult 24 + 14 sts*)

See chart.

### Contrast Cable Patt (*mult 6 + 2 sts*)

See chart.

### Back

With larger needles, CO 110 (134, 158, 182) sts.

Beg Main Cable Patt, and work even until piece measures approx 13" from beg, ending after WS row.

### Shape Armholes

BO 4 (12, 14, 20) sts at beg of next two rows, BO 2 (4, 9, 12) sts at beg of next two rows, then dec 1 st each side every row 0 (2, 1, 7) times, then every other row 6 (6, 7, 4) times—86 (86, 96, 96) sts rem.

Cont even in patt as established until piece measures approx 21 (21 ½, 22, 22 ½)" from beg, ending after WS row.

**Shape Shoulders**

BO 6 (6, 8, 8) sts at beg of next four rows, then BO 7 (7, 8, 8) sts at beg of next two rows—48 sts rem.

BO.

**Front**

Same as back until piece measures approx 19 (19 ½, 20, 20 ½)" from beg, ending after WS row.

**Shape Neck**

Work across first 34 (34, 39, 39) sts; join second ball of yarn and BO middle 18 sts, work to end row.

Work both sides at once with separate balls of yarn and BO 6 sts each neck edge once, BO 4 sts each neck edge once, BO 2 sts each neck edge once, then dec 1 st each neck edge every row three times—19 (19, 24, 24) sts rem each side.

Cont even, if necessary, until piece measures same as back to shoulders.

**Shape Shoulders**

Same as for back.

**Sleeves**

With larger needles, CO 50 sts.

Beg Contrast Cable Patt, and inc 1 st each side every sixth row 0 (0, 1, 5) times, every eighth row 0 (5, 13, 10) times, then every tenth row 11 (7, 0, 0) times, working new sts into Sleeve Cable Patt as they accumulate—72 (74, 78, 80) sts.

Cont even until sleeve measures approx 18 ½" from beg, ending after WS row.

**Shape Cap**

BO 4 (12, 13, 20) sts at beg of next two rows, then dec 1 st each side every eighth row 0 (0, 0, 1) time, every sixth row 0 (0, 0, 6) times, every fourth row 0 (7, 9, 0) times, every other row 16 (5, 3, 0) times, then every row 3 (0, 0, 0) times—26 sts rem.

BO 3 sts at beg of next four rows.

BO rem 14 sts.

**Finishing**

Sew right shoulder seam.

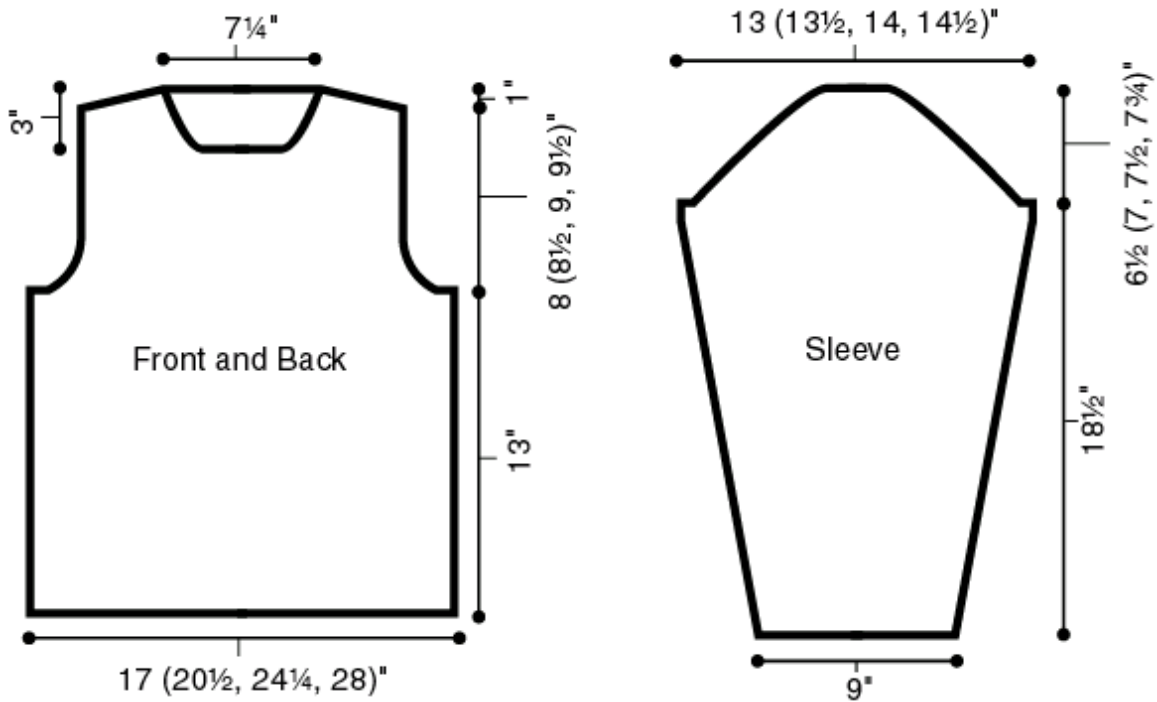
### Neckband

With RS facing and smaller needles, pick up and knit 104 sts evenly along neckline.

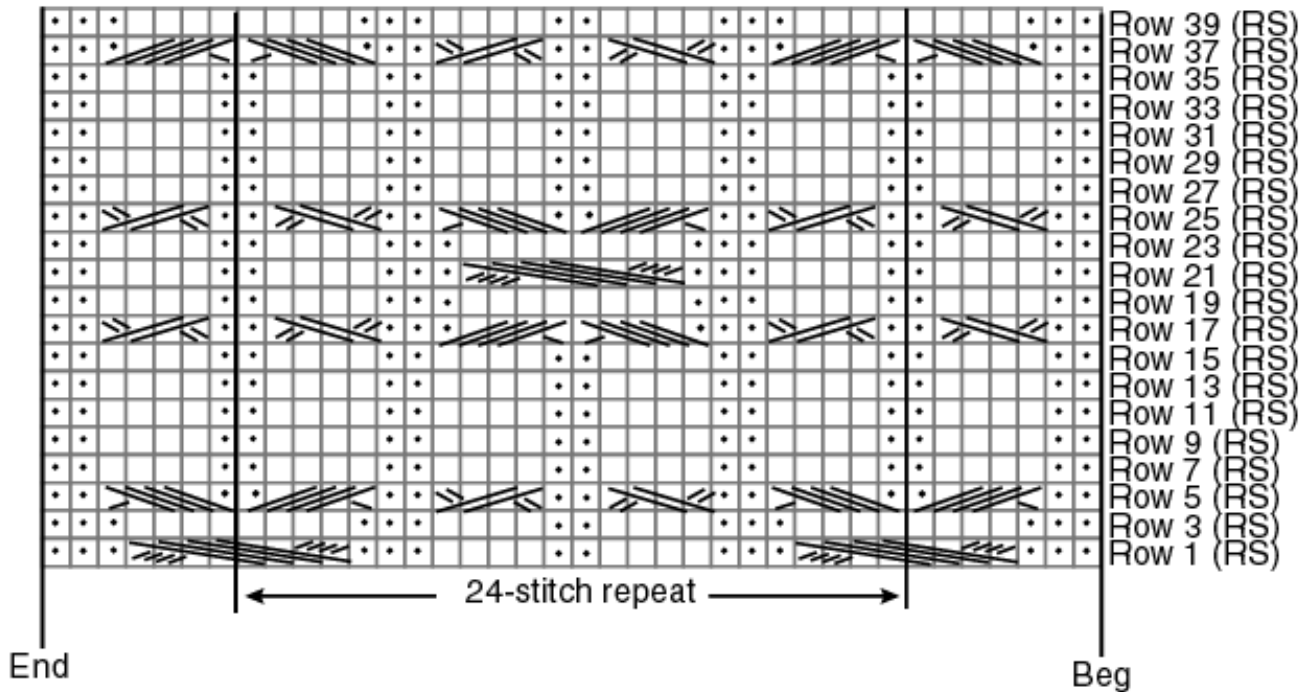
Work Contrast Cable Patt for 4". BO *loosely* in patt.

Sew left shoulder seam, including side of neckband.

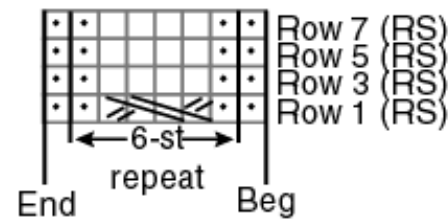
Set in sleeves. Sew sleeve and side seams.



### Main Cable Pattern



### Contrast Cable Pattern



KEY: Note: Only RS rows are shown on chart; for WS rows, knit the knit sts and purl the purl sts!

□ = K

• = P

• / / / / < = Slip next st onto cn and hold in back; K4; P1 from cn

> / / / / • = Slip 4 sts onto cn and hold in front; P1; K4 from cn

/ / / / / / / / = Slip 4 sts onto cn and hold in front; K4; K4 sts from cn

> / / < = Slip 2 sts onto cn and hold in back; K2; K2 from cn

> / / < = Slip 2 sts onto cn and hold in front; K2; K2 from cn