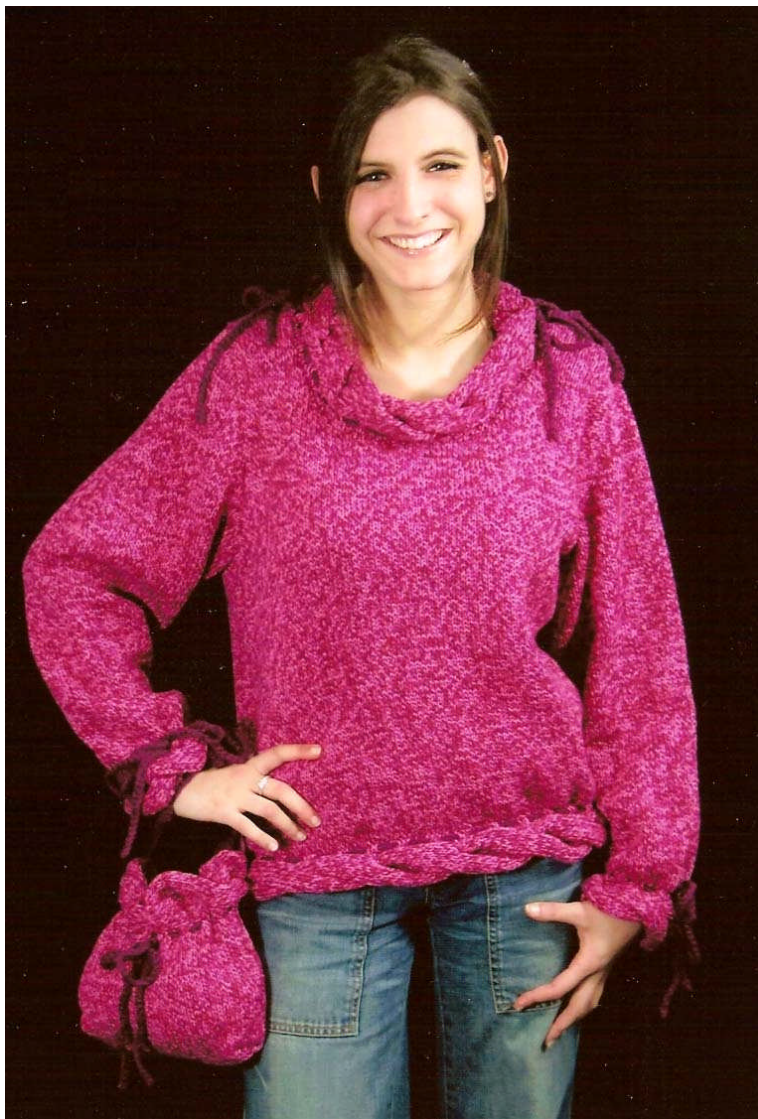




**Cable Edge Pullover (A111)
Using Cascade Sierra Quatro Pattern**



Cable Edge Pullover (A111)

Materials:

Sierra Quatro Main color 8/ 8/ 9 sks.
Contrasting color 1
Size 7 circular needle 29"
Crochet hook H

Finished measurements: 36 (40, 46)
Gauge: 5 sts & 6 rows = 1 inch in st st

Cable Band:

Cast on 24 sts.

Row 1,5,13,17: P4, K20

Row 2,4,6,8,10,12,14,16,18,20: P20, K4

Row 3,7,11,15,19: P2, YO, P2 tog, K20

Row 9: P4, C20B

REPEAT THESE 20 ROWS FOR PATTERN

C20B: sl next 10 sts onto a cable needle and hold in back of work, K next 10 sts, K sts from cable needle.

Body Worked in the round to armhole.

Bottom cable band: Cast on 24 sts and work 13 (14, 16) repeats of Cable Band pattern. Bind off. Sew cast on row to bound off row to form circle. With right side facing pick up and knit 180 (200, 230) sts around on eyelet side of band. Work in st st for 16 (16, 17)" or desired length to armhole.

Divide for front and back:

Armhole Shaping:

Bind off 10 (14,16) sts, work 80 (86, 99) sts, bind off 10 (14,16) and now work over remaining 80 (86,99) for back.

Dec 1 st each side every other row 7 times.

Continue working even until 8 ½ (8 ½, 10)" from armhole shaping. Work across 14 (14, 18) sts, bind off 44 (44, 48) sts, work to end. Attach another yarn and work both sides at the same time. Work one row even. Dec one st at neck edges on next row. Work until armhole measures 9 (9,10 ½)".

Shape Shoulders:

Bind off 4 (4,6) sts at the beg of next 4 rows.

Bind off 5 (5,6) sts at the beg of next 2 (2,1) rows,

Front:

Work as for Back until armhole measures 3 (3, 4 ½)". On next row, work 23 (23, 29) sts, attach another ball of yarn, bind off center 26 sts, work across row. Working both sides at once, dec 1 sts at each neck edge every other row 10 (10, 11) times. Continue working even until armhole measures 9 (9, 10)"

Shape Shoulders:

Work shoulder shaping as for back.

Sleeves:

Cast on 24 sts and work 4 (4 ,4) repeats of Cable Band pattern. Bind off. With right side facing, pick up and knit 64 (64, 64) sts across eyelet side of band. Work even in st st for 4" in. Increase 1 st each side every 5 (5,3) rows 12 (12,21) times. Work even to 17 (17 ½",17 ½) or desired length to armhole.

Shape cap:

Bind off 5 (7, 8) sts on the next two rows.

Dec 1 st each side of next row 2 times, then every 2 rows **28** times.

Neck Band:

Cast on 24 sts and work 10 repeats of Cable Band pattern. Bind off. Sew to cast on edge forming a ring. Sew shoulder seams. With the join at the back of the neck, sew cable band to neck of sweater on the eyelet edge.

Contrast Trim:

Sleeves: With a double strand of contrasting color and size G hook or H hook make a chain 34" long and weave in the ends. Weave in and out the eyelet at the cuff of sleeve and tie into a bow. Repeat for second sleeve.

Bottom: Make two chains as above about 39" long weaving one in the front half and the other in the back half and tie in bows at the sides.

Neck: Back: Make a chain 39" long and weave in the back of the sweater stopping at the shoulder seams. **Front:** Make a chain 49" long and weave in the front of the sweater. Tie in bows at shoulder seams.

Sew sleeve seams. Sew sleeves to sweater.